



MONTARA WATER AND SANITARY DISTRICT AGENDA

For Meeting Of: **October 5, 2017**

TO: BOARD OF DIRECTORS

FROM: Clemens Heldmaier, General Manager *CH*

SUBJECT: SAM Flow Report for August 2017

The Sewer Authority Mid-Coastside (SAM) has prepared the following attached reports for the SAM Board of Directors and the California Regional Water Quality Control Board:

- Flow Report for August 2017.
- Collection System Monthly Overflow Report – August 2017.

The Average Daily Flow for Montara was 0.226 MGD in August 2017. There was no reportable overflow in August in the Montara System. SAM indicates there were 0.14 inches of rain in August 2017.

RECOMMENDATION:

Review and file.

Attachments

Sewer Authority Mid-Coastside

Monthly Collection System Activity/SSO Distribution Report, August 2017

August 2017

Total	Number of S.S.O.'s			
	HMB	GCSD	MWSD	SAM
Roots	0	0	0	0
Grease	0	0	0	0
Mechanical	0	0	0	0
Wet Weather	0	0	0	0
Other	0	0	0	0
Total	0	0	0	0

12 Month Moving Total

Total	12 month rolling Number			
	HMB	GCSD	MWSD	SAM
Roots	1	0	0	0
Grease	0	0	0	0
Mechanical	6	0	1	5
Wet Weather	2	0	0	0
Other	1	0	1	0
Total	10	0	2	5
	30%	0%	20%	50%

Reportable SSOs

Total	Reportable Number of S.S.O.'s			
	HMB	GCSD	MWSD	SAM
August 2017	0	0	0	0
12 Month Moving Total	3	0	2	5

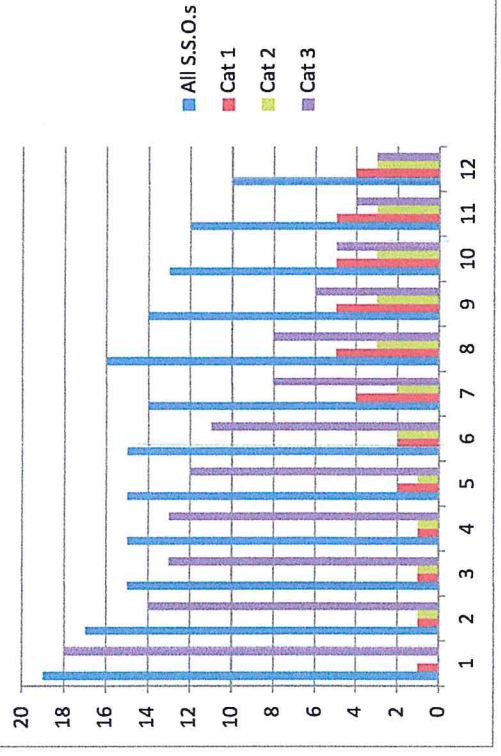
SSOs / Year / 100 Miles

Total	Number of S.S.O.'s / Year / 100 Miles			
	HMB	GCSD	MWSD	SAM
August 2017	0.0	0.0	0.0	0.0
12 Month Moving Total	8.1	0.0	7.4	68.5
Category 1	2.7	0.0	3.7	27.4
Category 2	2.7	0.0	0.0	27.4
Category 3	2.7	0.0	3.7	13.7
Miles of Sewers	104.5	37.0	33.2	27.0
	35.4%	31.8%	25.8%	7.3
				7.0%

12 Month Rolling Total Sewer Cleaning Summary

Month	HMB	GCSD	MWSD	Total Feet	Total Miles
Sep - 16	13,228	35,432	11,406	60,066	11.4
Oct - 16	27,226	7,389	15,283	49,898	9.5
Nov - 16	25,535	33,638	10,436	69,609	13.2
Dec - 16	33,928	19,306	10,127	63,361	12.0
Jan - 17	16,650	16,144	11,837	44,631	8.5
Feb - 17	12,216	4,866	11,531	28,613	5.4
Mar - 17	15,347	11,667	10,133	37,147	7.0
Apr - 17	13,101	11,588	11,460	36,149	6.8
May - 17	12,044	12,483	9,547	34,074	6.5
June - 17	18,411	17,317	8,567	44,295	8.4
July - 17	28,276	20,290	6,368	54,934	10.4
Aug - 17	21,769	22,465	20,044	64,278	12.2
Annual ft	237,731	212,585	136,739	587,055	
Annual Mi.	45.0	40.3	25.9		111.2

12 Month Moving SSO Totals Through August 2017



Attachment A

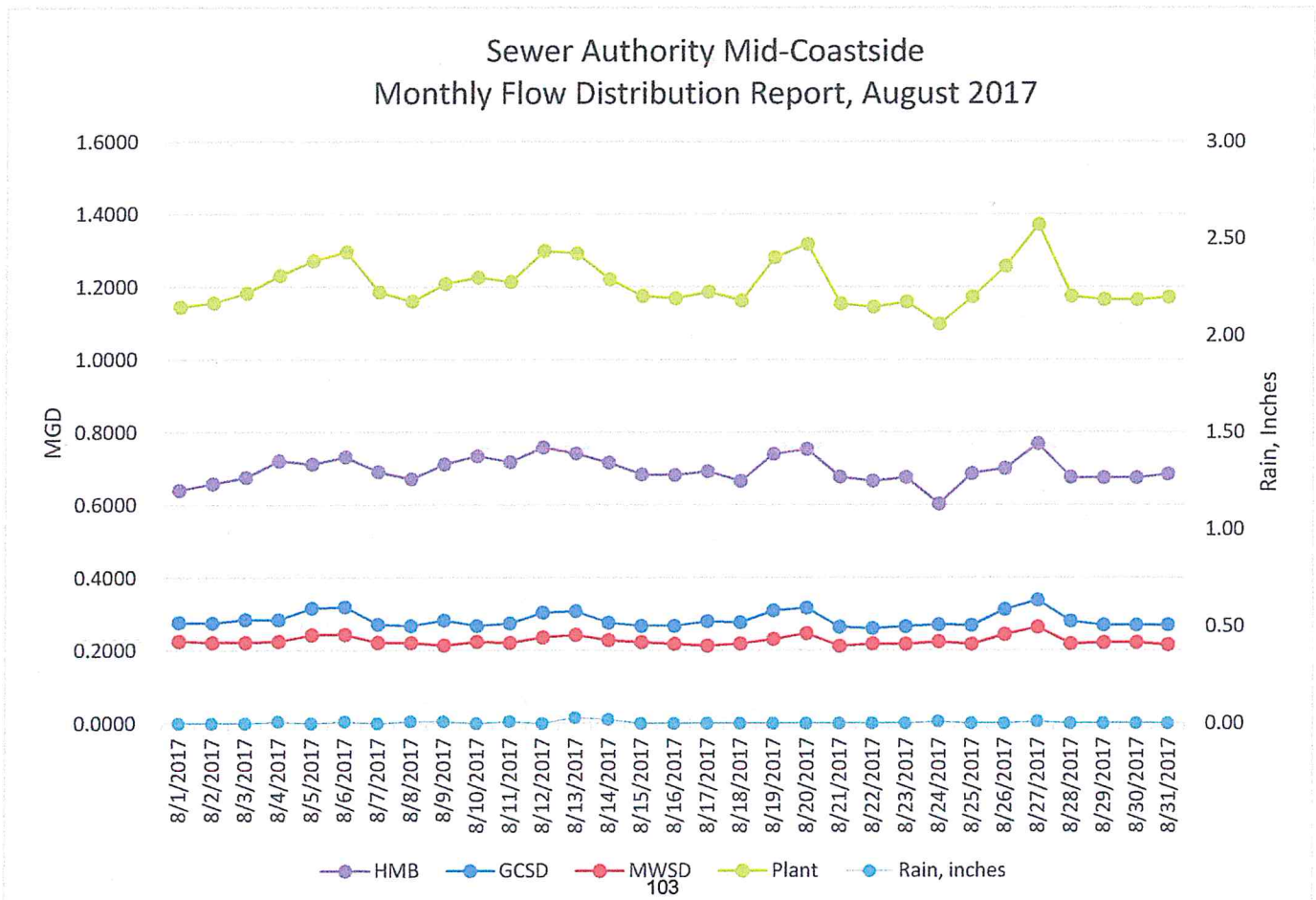
Flow Distribution Report Summary For August 2017

The daily flow report figures for the month of August 2017
have been converted to an Average

Daily Flow (ADF) for each Member Agency.
The results are attached for your review.

The summary of the ADF information is as follows:

	<u>MGD</u>	<u>%</u>
The City of Half Moon Bay	0.697	57.7%
Granada Community Services District	0.284	23.5%
Montara Water and Sanitary District	<u>0.226</u>	<u>18.7%</u>
Total	1.207	100.0%



Sewer Authority Mid-Coastside

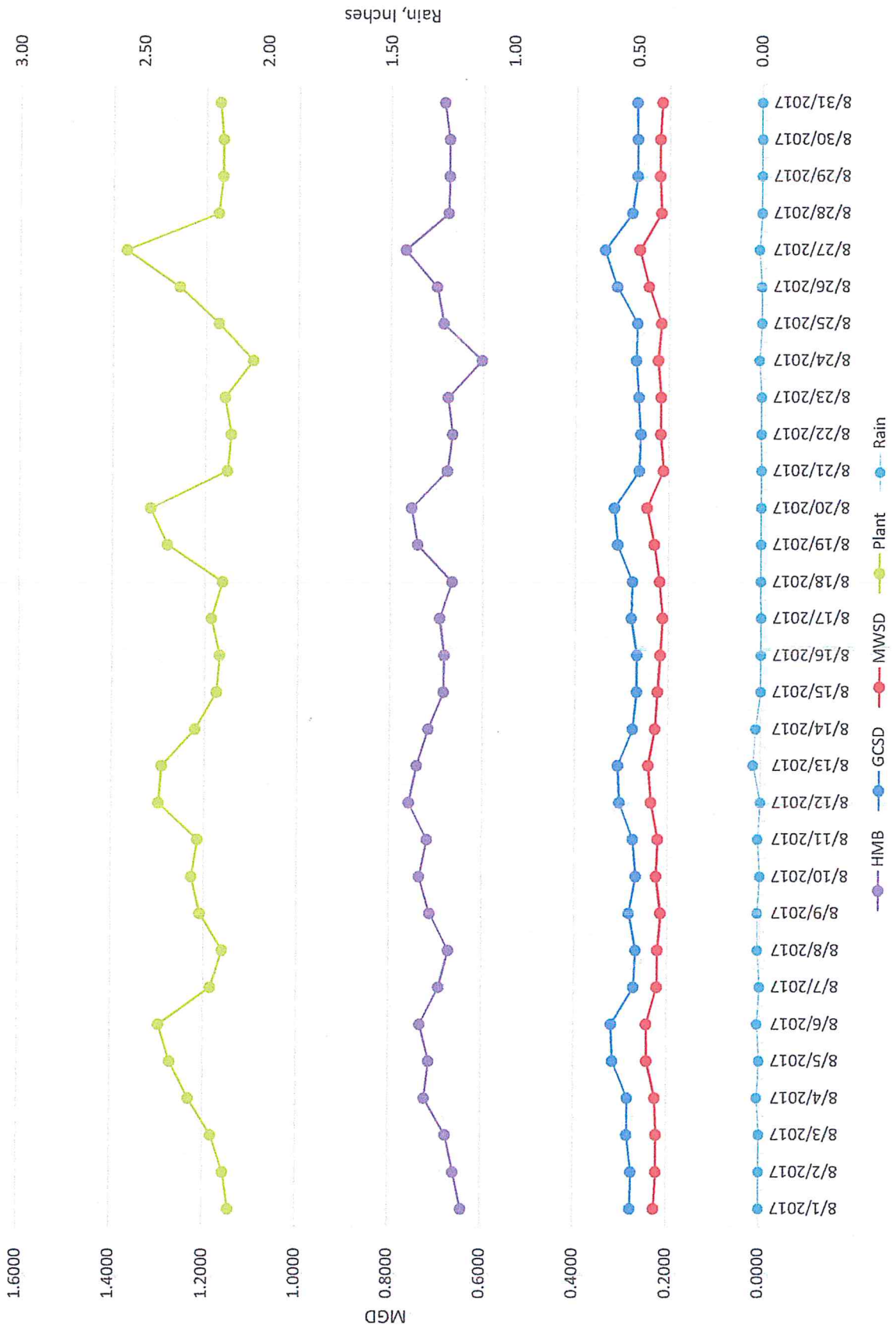
Monthly Flow Distribution Report for August 2017

<u>Date</u>	<u>HMB</u>	<u>GCSD</u>	<u>MWSD</u>	<u>Plant</u>	<u>Rain Plant</u>	<u>Rain Portola</u>	<u>Rain Montara</u>
8/1/2017	0.6415	0.2775	0.226	1.145	0.00	0.00	0.00
8/2/2017	0.6588	0.2757	0.222	1.157	0.00	0.00	0.00
8/3/2017	0.6760	0.2851	0.222	1.183	0.00	0.00	0.00
8/4/2017	0.7218	0.2847	0.225	1.232	0.01	0.01	0.00
8/5/2017	0.7125	0.3164	0.243	1.272	0.00	0.00	0.00
8/6/2017	0.7323	0.3198	0.244	1.296	0.01	0.02	0.01
8/7/2017	0.6918	0.2720	0.222	1.186	0.00	0.00	0.00
8/8/2017	0.6715	0.2679	0.221	1.160	0.01	0.00	0.00
8/9/2017	0.7121	0.2827	0.214	1.209	0.01	0.01	0.04
8/10/2017	0.7346	0.2680	0.224	1.227	0.00	0.00	0.01
8/11/2017	0.7187	0.2746	0.221	1.214	0.01	0.01	0.02
8/12/2017	0.7585	0.3043	0.236	1.299	0.00	0.00	0.00
8/13/2017	0.7418	0.3080	0.243	1.293	0.03	0.01	0.02
8/14/2017	0.7167	0.2764	0.228	1.221	0.02	0.04	0.03
8/15/2017	0.6841	0.2680	0.223	1.175	0.00	0.00	0.00
8/16/2017	0.6830	0.2680	0.218	1.169	0.00	0.00	0.00
8/17/2017	0.6932	0.2804	0.213	1.187	0.00	0.00	0.00
8/18/2017	0.6661	0.2774	0.219	1.163	0.00	0.00	0.00
8/19/2017	0.7409	0.3096	0.231	1.282	0.00	0.00	0.00
8/20/2017	0.7539	0.3172	0.247	1.318	0.00	0.00	0.00
8/21/2017	0.6776	0.2643	0.212	1.154	0.00	0.00	0.00
8/22/2017	0.6663	0.2608	0.218	1.145	0.00	0.00	0.00
8/23/2017	0.6765	0.2655	0.217	1.159	0.00	0.00	0.00
8/24/2017	0.6032	0.2711	0.224	1.098	0.01	0.01	0.01
8/25/2017	0.6867	0.2691	0.217	1.173	0.00	0.00	0.00
8/26/2017	0.7007	0.3123	0.244	1.257	0.00	0.00	0.00
8/27/2017	0.7690	0.3385	0.264	1.372	0.01	0.00	0.00
8/28/2017	0.6761	0.2802	0.218	1.174	0.00	0.00	0.00
8/29/2017	0.6746	0.2696	0.221	1.165	0.00	0.00	0.00
8/30/2017	0.6745	0.2692	0.221	1.165	0.00	0.00	0.00
8/31/2017	0.6851	0.2704	0.216	1.171	0.00	0.00	0.00
Totals	21.600	8.805	7.014	37.419	0.12	0.11	0.14

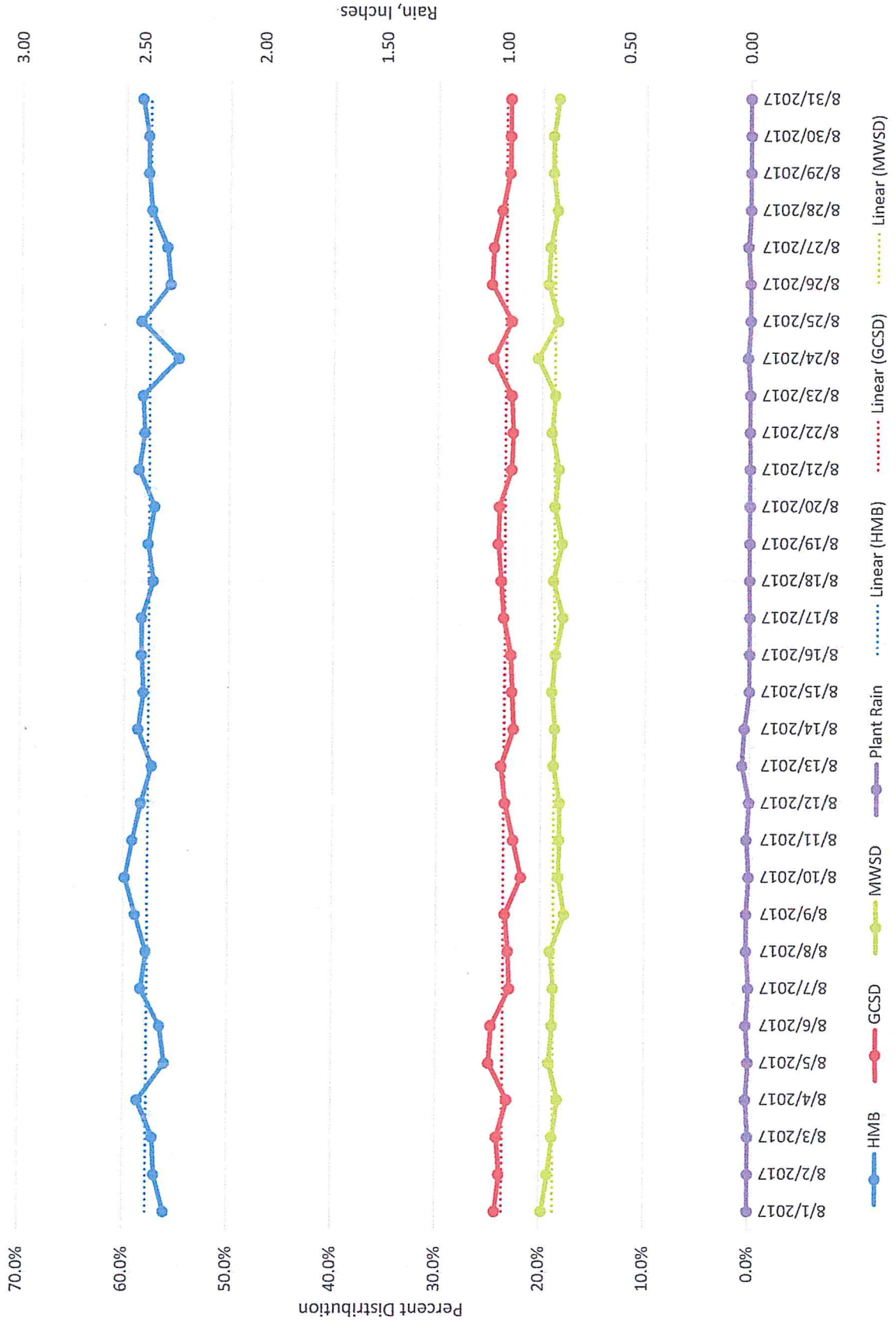
Summary

	<u>HMB</u>	<u>GCSD</u>	<u>MWSD</u>	<u>Plant</u>
Minimum	0.603	0.261	0.212	1.098
Average	0.697	0.284	0.226	1.207
Maximum	0.769	0.338	0.264	1.372
Distribution	57.7%	23.5%	18.7%	100.0%

Sewer Authority Mid-Coastside Monthly Flow Distribution Report, August 2017



Percent Distribution August 2017



Most recent flow calibration December 2016 PS, November 2016 Plant

