



**Montara Water
and Sanitary District**
Serving the Community of Montara and Moss Beach

P.O. Box 370131
8888 Cabrillo Hwy
Montara, CA 94037-0131
t: 650.728.3545 • f: 650.728.8556

To sensitively manage the natural resources entrusted to our care, to provide the people of Montara - Moss Beach with reliable, high – quality water, wastewater, and trash disposal at an equitable price, and to ensure the fiscal and environmental vitality of the district for future generations. Be open to providing other services desired by our community.

AGENDA

District Board of Directors

November 19, 2020 at 7:30 p.m.

DUE TO COVID-19, THIS MEETING WILL BE CONDUCTED REMOTELY PURSUANT TO THE PROVISIONS OF THE GOVERNOR'S EXECUTIVE ORDERS N-25-20 AND N-29-20 TEMPORARILY SUSPENDING AND MODIFYING CERTAIN TELECONFERENCE REQUIREMENTS UNDER THE RALPH M. BROWN ACT. MEMBERS OF THE PUBLIC MAY NOT ATTEND THIS MEETING IN PERSON.

Directors, staff and the public may participate remotely via the application ZOOM:

ZOOM MEETING INFORMATION:

WEBSITE: <https://us02web.zoom.us/j/87685783614?pwd=ZWkxYWExdEc1NytITVBmRmgzaFk0Zz09>

MEETING ID: 876 8578 3614

Password: 522913

CALL IN PHONE NUMBER: +1 669 900 9128

INSTRUCTIONS for remote access are available at <https://support.zoom.us/hc/en-us/articles/201362193-Joining-a-Meeting>. You also may view video during the meeting via live stream or after the meeting at <https://videoplayer.telvue.com/player/wuZKb9gwEY7sMACIIsr7VSJglB35kNZA/stream/159?fullscreen=true&showtabssearch=false&autostart=false> . If you experience technical difficulties or have technical questions prior to or during the meeting, please contact MWSD's IT support at (650) 728-7843.

Note: Public participation is not permitted during closed session discussion items.

Public Comment

In accordance with the Government Code, members of the public may address the Board on specific agenda items when the matter is announced by the Board President. Any other item of interest that is within the subject matter jurisdiction of the District may be addressed during the Oral Comments portion of the meeting. A "raise hand" button available for every Zoom user can be used to alert the President of the intent to comment.

Public comment also may be submitted in writing (in accordance with the three-minute per speaker limit) via email to info@mwsd.net up to one-hour prior to the scheduled meeting time. Please indicate in your email the agenda item to which your comment applies. The District Clerk will read all comments into the record. Comments and materials related to an item on this Agenda submitted after distribution of the Agenda Packet are available in the District Clerk's office during normal business hours and may also be available on the District's web site (www.mwsd.montara.org) subject to staff's ability to post the documents before the meeting.

Upon request, this Agenda and written agenda materials will be made available in appropriate alternative formats to persons with a disability. Request for a disability-related modification or accommodation in order to participate in the public meeting should be emailed to info@mwsd.net or submitted by phone at 650-728-3545 at least two days before the meeting. Requests will be granted whenever possible and resolved in favor of accessibility.

Subject to Change: Given the current public health emergency and the rapidly evolving federal, state, and local orders, the format of this meeting may be altered, or the meeting may be canceled. You may check on the status of the meeting by visiting the District's website at: <http://mwsd.montara.org> .

CALL TO ORDER

ROLL CALL

PRESIDENT'S STATEMENT

ORAL COMMENTS (Items other than those on the agenda)

PUBLIC HEARING

CONSENT AGENDA

OLD BUSINESS

1. [Review of Information and Possible Action Related to SFPUC Construction Atop Montara Mountain.](#)

NEW BUSINESS (none)

REPORTS

1. Sewer Authority Mid-Coastside Meetings (Slater-Carter).
2. MidCoast Community Council Meeting (Slater-Carter).
3. CSDA Report (Lohman).
4. LAFCo Report (Lohman).
5. Attorney's Report (Fitzgerald).
6. Directors' Reports.
7. General Manager's Report (Heldmaier).

FUTURE AGENDAS

CONVENE IN CLOSED SESSION

CONFERENCE WITH LEGAL COUNSEL – EXISTING LITIGATION

(Government Code §54956.9(d)(1))

Case Name: *City of Half Moon Bay v. Granada Community Services District, et al.*

(Santa Clara County Super. Ct. No. 17CV316927)

CONFERENCE WITH REAL PROPERTY NEGOTIATORS (Government Code §54956.8)

Property: 771 Rivera Rd., Montara, CA

Agency Negotiator(s): District General Manager; District General Counsel; District Real Estate Broker

Negotiating parties: Coast Wholesale Florists, a corporation/Miller-Havice Ranch

Under Negotiation: To be determined.

REPORT OF ACTION TAKEN IN CLOSED SESSION, IF ANY

ADJOURNMENT


The District has a curfew of 10:30 p.m. for all meetings. The meeting may be extended for one hour by vote of the Board.



MONTARA WATER AND SANITARY DISTRICT AGENDA

For Meeting Of: November 19, 2020

TO: BOARD OF DIRECTORS

FROM: Clemens Heldmaier, General Manager 

**SUBJECT: Review of Information and Possible Action
Related to SFPUC Construction Atop Montara
Mountain.**

This item was brought to the MWSD board on November 5, 2020 at the request of Director Harvey and found a great level of interest with members of the board and public. The Advanced Quantitative Precipitation Information (AQPI) system project found general support with all meeting attendees. High Definition Radar Systems will be installed that will allow for immediate and more granulated weather forecast and observation. This can help water managers and the public in planning efforts. However, the location of the project exactly on the highest peak in the San Francisco Peninsula, the peak of Montara Mountain, and its destruction in the construction process was criticized.

Local community member Mark Verlander presented photos from the construction site showing that the peak of Montara Mountain was removed and leveled. The peak was originally a granitic rock formation with stunning vistas of the Pacific Ocean, the entire Bay Area, Mount Tamalpais, Mount Diablo, and Mount Hamilton. The peak is located in the unincorporated San Mateo County and belongs since some time to property owned by SFPUC. Access was granted until 2019 when the peak was fenced off. According to SFPUC Communications Manager in a news article from the HMB Review Aug 7, 2019, the fence was erected to protect habitat of the San Bruno Elfin Butterfly and the Mission Blue Butterfly.

Also in 2019 SFPUC circulated a Preliminary Mitigated Negative Declaration, a self-certification satisfying California Environmental Review Process that can be viewed here: https://files.ceganet.opr.ca.gov/252305-2/attachment/5Gz_VWugePA4brNpoK5OUX0206qjYhqCOba4IT71jXstVZxhBpJOjZeRtnjksRzLQfoTHF3a4JSfRy10

At the last MWSD meeting questions about the public's historic access and possible rights to the peak were raised. Concerns about the removal of USGS Marker # HT2784, a protected historic site and its importance for measurements in the seismically active area came up. Additionally, concerns of the importance of the symbolic nature of the peak for



MONTARA WATER AND SANITARY DISTRICT AGENDA

For Meeting Of: November 19, **2020**

TO: BOARD OF DIRECTORS

FROM: Clemens Heldmaier, General Manager

the community and native tribes were brought up. Under AB 52 mountain tops can be protected cultural resources.

In this context it was questioned if the provided Mitigated Negative Declaration was clear enough to understand the immediate impact to the peak of Montara Mountain and if notified parties really understood that the top would be removed.

Tim Ramirez with the SFPUC will be available at the meeting to provide further information on the project and the above raised concerns.

RECOMMENDATION:

This item is for information, board discussion and staff direction.

Attachments

National Geodetic Survey Data Explorer

National Geodetic Survey



- NGS Home
- About NGS
- Data & Imagery
- Tools
- Surveys
- Science & Education

Search

View Map View List

Help
Map Layers

Horizontal

- CORS
- GPS Sites
- Classical Horizontal

Vertical

- Vertical Control
- Approximate Heights

Find Marks Clear Marks
Location radius 5 Miles
Mark Center Clear X

Go To Location

PID : HT2784

Name : MONTARA
MOUNTAIN PEAK
Elev Source : None
Elev Order : None
Pos Source : ADJUSTED
Pos Order : 3
Ortho Ht : None
Ellip Ht : None

Datasheet

Show/Hide Legend



Map Satellite

- ### Control Types
- CORS
 - GPS Site
 - Classic Horizontal
 - Vertical Control
 - Approx Height
 - GPS and Vertical Control
 - GPS and Approx Height
 - Classic Horz and Vert Control
 - Classic Horz and Approx Ht



PID : HT2784

Name : MONTARA
MOUNTAIN PEAK
Elev Source : None
Elev Order : None
Pos Source : ADJUSTED
Pos Order : 3
Ortho Ht : None
Ellip Ht : None

Datasheet

Google

The NGS Data Sheet

See file [dsdata.pdf](#) for more information about the datasheet.

PROGRAM = datasheet95, VERSION = 8.12.5.10

Starting Datasheet Retrieval...

1 National Geodetic Survey, Retrieval Date = NOVEMBER 16, 2020

HT2784 *****

HT2784 DESIGNATION - MONTARA MOUNTAIN PEAK

HT2784 PID - HT2784

HT2784 STATE/COUNTY- CA/SAN MATEO

HT2784 COUNTRY - US

HT2784 USGS QUAD - MONTARA MOUNTAIN (2018)

HT2784

HT2784 *CURRENT SURVEY CONTROL

HT2784

HT2784* NAD 83(1992) POSITION- 37 33 41.17021(N) 122 28 39.61437(W) ADJUSTED

HT2784* NAD 83(1992) EPOCH - 1991.35

HT2784

HT2784 GEOID HEIGHT - -32.767 (meters) GEOID18

HT2784 LAPLACE CORR - 7.76 (seconds) DEFLEC18

HT2784 HORZ ORDER - THIRD

HT2784

HT2784.The horizontal coordinates were established by classical geodetic methods
HT2784.and adjusted by the National Geodetic Survey in March 1994.

HT2784.

HT2784.Significant digits in the geoid height do not necessarily reflect accuracy.
HT2784.GEOID18 height accuracy estimate available [here](#).

HT2784

HT2784.Click [photographs](#) - Photos may exist for this station.

HT2784

HT2784.The Laplace correction was computed from DEFLEC18 derived deflections.

HT2784

HT2784. The following values were computed from the NAD 83(1992) position.

HT2784

HT2784;	North	East	Units	Scale	Factor	Converg.
HT2784;SPC CA 3	- 619,644.932	1,825,291.398	MT	0.99993463	-1 12 38.9	
HT2784;SPC CA 3	- 2,032,951.75	5,988,476.86	sFT	0.99993463	-1 12 38.9	
HT2784;UTM 10	- 4,157,285.456	546,131.042	MT	0.99962621	+0 19 06.3	

HT2784

HT2784_U.S. NATIONAL GRID SPATIAL ADDRESS: 10SEG4613157285(NAD 83)

HT2784

HT2784 SUPERSEDED SURVEY CONTROL

HT2784

HT2784 NAD 83(1986)- 37 33 41.15514(N) 122 28 39.60554(W) AD(1984.00) 3

HT2784 NAD 27 - 37 33 41.39200(N) 122 28 35.70800(W) AD() 3

HT2784 USSD - 37 33 42.54900(N) 122 28 36.90400(W) AD() 3

HT2784 USSD - 37 33 42.51000(N) 122 28 36.94000(W) AD() 3

HT2784

HT2784.Superseded values are not recommended for survey control.

HT2784

HT2784.NGS no longer adjusts projects to the NAD 27 or NGVD 29 datums.

HT2784. See file [dsdata.pdf](#) to determine how the superseded data were derived.

HT2784

HT2784_MARKER: 03 = MOUNTAIN PEAK

HT2784

HT2784	HISTORY	- Date	Condition	Report By
HT2784	HISTORY	- 1868	FIRST OBSERVED	COASUR
HT2784	HISTORY	- 1958	SEE DESCRIPTION	CGS

HT2784

HT2784

STATION DESCRIPTION

HT2784

HT2784'DESCRIBED BY COAST SURVEY (CGS) 1868

HT2784'THE POSITION THAT IS ATTACHED TO ADJ_ID 17389/110 IS A POST

HT2784'1906 EARTHQUAKE POSITION.

HT2784

HT2784

STATION RECOVERY (1958)

HT2784

HT2784'RECOVERY NOTE BY COAST AND GEODETIC SURVEY 1958 (JCM)

HT2784'THE MOUNTAIN, KNOWN AS NORTH PEAK, IS LOCATED (AIRLINE) ABOUT

HT2784'3-1/4 MI. SE OF SAN PEDRO POINT, 3 MI. NE OF THE POINT MONTARA

HT2784'LIGHT STATION, AND IS THE N AND ONE OF THE HIGHEST PEAKS

HT2784'ON MONTARA MOUNTAIN.

HT2784'

HT2784'A SEARCH WAS MADE BUT NO MARKS WERE FOUND.

HT2784'

HT2784'THIS IS AN INTERSECTION STATION.

*** retrieval complete.

Elapsed Time = 00:00:02

https://www.hmbreview.com/news/montara-mountain-peak-closed-to-hikers/article_2886282e-b93d-11e9-8f87-d34677e62007.html

FEATURED

Montara Mountain peak closed to hikers

New gate, fence keep visitors out

By Ashlyn Rollins

Aug 7, 2019

Home / Local News Stories



The San Francisco Public Utilities Commission has fenced off the summit of Montara Mountain. It says the move was necessary to protect endangered butterflies that rely on the habitat. Photo courtesy Franz Dill

Sean Handel and Franz Dill embarked on their weekly run up Montara Mountain, looking forward to the view from the north peak where much of the Bay Area is visible. When they neared the top, a gate blocked their way with a sign that read, “No trespassing, restricted area.”

“We just kind of stood there very befuddled,” Dill said. “Over the course of the next day and evening it really began to set in, the magnitude of what we saw. The summit was closed off.”

The land is owned by the San Francisco Public Utilities Commission and visitors were never supposed to be on the peak, SFPUC Communications Manager Betsy Lauppe Rhodes said. However, nobody was monitoring the area.

That changed when a proposed rainfall prediction and radio site on the mountain needed an environmental review. In the course of that review, the commission found the area is a habitat for the endangered San Bruno Elfin butterfly and, possibly, the Mission Blue butterfly. To protect the species, Rhodes said restoring the gate and fence became a priority. Officials say the fence was installed about two weeks ago.

“It was really the discovery of the active habitat and the activities of the butterflies,” Rhodes said. “We said, ‘Oh my gosh, we need to reprioritize this fence.’”

Jake Niebaum has hiked to the summit since 1993, journaling every one of his 60 trips. He said he’s had unrestricted access the entire time.

“It’s ridiculous,” he said. “Something that’s been open to the public for so long is going to be taken away.”

Handel and Dill echoed his concerns.

“It’s a very unique view in the Bay Area that should not be closed off to the public,” Handel said.

“The butterfly thing doesn’t make any sense to me,” he added in a later interview. “There’s never been any discussion of that. It seems like a reason after the fact to put up fencing.”

The rainfall prediction and radio site project is in the final stages of approval, and it will be discussed again at the utilities commission’s 1:30 p.m. meeting on Aug. 13 at San Francisco City Hall.

Handel and Niebaum are frustrated with what they see as a lack of communication with people in San Mateo County.

“(The) process has been without public input,” Handel said.

Project documents indicate that mailers were sent in early 2015 to property owners and residents within 300 feet of the project site that a project was receiving an environmental review. In this case, that meant few, if any, Coastsiders learned of the project before it began. The Midcoast Community Council also received the notification and asked to be added to a notification list for future documents, but minutes from 2015 to present do not show the MCC ever discussed it.

The San Francisco-based commission introduced the project in June this year. The project’s purpose is to improve the accuracy of rainfall forecasts and send flooding and storm warnings to local water agencies. Construction would take four to six months.



San Francisco Water Power Sewer

Operator of the Hetch Hetchy Regional Water System

525 Golden Gate Avenue, 13th Floor

San Francisco, CA 94102

T 415.554.3155

F 415.554.3161

TTY 415.554.3488

October 8, 2019

TO: Commissioner Ann Moller Caen, President
Commissioner Francesca Vietor, Vice President
Commissioner Anson Moran
Commissioner Sophie Maxwell
Commissioner Tim Paulson

THRU: Harlan L. Kelly, Jr., General Manager *HK*

FROM: Steven R. Ritchie, Assistant General Manager, Water
Tim Ramirez, Division Manager, Natural Resources and Lands
Management *IMR*

SUBJECT: Education Opportunities and Recreation Improvements on the
Peninsula Watershed, including Montara Mountain

Purpose

The Commission approved the Montara Mountain Rainfall Prediction and Radio Replacement Project at the August 13, 2019 meeting, and in response to public comments directed Water Enterprise staff to meet with local community representatives to discuss their concerns related to public access. Water Enterprise staff previously provided the Commission an overview of education opportunities and recreation improvements on the Peninsula Watershed in December 2014, and this memo updates this overview and summarizes staff activity since the August 13, 2019 meeting regarding Montara Mountain.

Overview

The SFPUC Peninsula Watershed encompasses approximately 23,000 acres of land in San Mateo County. The Peninsula Watershed is a state-designated Fish and Wildlife Refuge, the Golden Gate National Recreation Area (GGNRA) administers federal scenic and scenic/recreation easements over the watershed, and it's an important component of the Golden Gate Biosphere, as recognized by United Nations Educational, Scientific, and Cultural Organization (UNESCO).

London N. Breed
Mayor

Ann Moller Caen
President

Francesca Vietor
Vice President

Anson Moran
Commissioner

Sophie Maxwell
Commissioner

Tim Paulson
Commissioner

Harlan L. Kelly, Jr.
General Manager

Services of the San Francisco Public Utilities Commission

OUR MISSION: To provide our customers with high-quality, efficient and reliable water, power and sewer services in a manner that values environmental and community interests and sustains the resources entrusted to our care.



Consistent with the Final Peninsula Watershed Management Plan (PWMP, 2002) and Board of Supervisors Resolution No. 373-97, the Water Enterprise works to provide education opportunities via recreation improvements on the Peninsula Watershed that are compatible with the need to protect drinking water quality and a wide array of native, and often rare, ecological resources. There are two major regional trail systems that run north/south on the Peninsula Watershed – the Crystal Springs Regional Trail, operated and maintained by San Mateo County Parks; and the Bay Area Ridge Trail (Ridge Trail), operated and maintained by Water Enterprise staff. The existing Fifield/Cahill Ridge Trail Program, overseen by Natural Resources and Lands Management Division, was included in the PWMP Final Environmental Impact Report (FEIR, 2001). These regional trails, and related connectors, provide 31 miles of existing trail access to the Peninsula Watershed.

The Water Enterprise has been working on three new trail projects that were presented in the PWMP (collectively these would provide an additional 11 miles of trail access), plus a fourth that was not included in the PWMP (approximately 5 miles). These are described in more detail below and shown on the attached Peninsula Watershed Trails map. The SFPUC is a member of the Peninsula Working Group (PWG), which includes San Mateo County Parks, the GGNRA, California State Parks, Peninsula Open Space Trust, Midpeninsula Regional Open Space District, and the California Coastal Conservancy. Coordination and outreach on all of these proposals happens in the PWG forum, and also regularly with other interested organizations and individuals, including the Bay Area Ridge Trail Council, Committee for Green Foothills, and the California Native Plant Society. Natural Resources and Lands Management staff are developing the Peninsula Watershed Trails Interpretive Master Plan, which outlines specific education programs delivered to trails users as part of all of the SFPUC's existing and future trail projects.

Bay Area Ridge Trail

The Ridge Trail is a project started in 1987 by the Bay Area Ridge Trail Council (Ridge Trail Council) to create an approximately 550-mile long continuous trail for hikers, mountain bicyclists, and equestrians along the ridgelines overlooking San Francisco Bay. The Ridge Trail currently has approximately 375 miles of trail open and permanently protected for recreational use. The proposed construction of the Southern Skyline Boulevard Ridge Trail Extension (Ridge Trail Extension) would complete approximately 6 miles of new trail on the Peninsula Watershed in San Mateo County between Highway 92 and the GGNRA's Phleger Estate (see Peninsula Watershed Trails map, "Planned extension of Ridge Trail").

The PWMP Final Environmental Impact Report (2001) and Final PWMP (2002) included the Ridge Trail Extension, which would meet the PWMP goal to provide opportunities for compatible recreational uses in the Peninsula Watershed and enhance public education opportunities and awareness of natural resources, water quality, and water supply issues. Similar to the existing Fifield/Cahill Ridge Trail, this would provide an opportunity to educate the general public about the SFPUC's responsibilities as a regional water provider and environmental steward of the Peninsula Watershed.

The proposed Ridge Trail Extension would be operated in coordination with the Fifield/Cahill Ridge Trail, which currently is operated by the SFPUC under a docent-led only access program three days a week. The docent program is limited to three trips per day, and includes hiking, running, mountain biking, and equestrian uses. With the completed construction of the Ridge Trail Extension, the SFPUC staff propose to operate the entire length of the Ridge Trail on the SFPUC Peninsula Watershed (approximately 16 miles).

Ridge Trail Extension Update

The construction of the proposed Ridge Trail Extension and operation of the entire length of the Ridge Trail on the SFPUC Peninsula Watershed is the subject of a Draft Environmental Impact Report scheduled for public review and comment before the end of this calendar year. The SFPUC received a grant from the State Coastal Conservancy (SCC, \$185,000) in 2010 to develop detailed plans and engineering designs, and in 2013 was recommended for a SCC grant for construction (\$1,000,000). The construction grant also includes planning and design for the 1.5 mile segment of the Ridge Trail on the GGNRA's Phleger Estate, to ensure a continuous and consistent alignment to the south. The certification of the Final EIR is scheduled for early 2020, and construction is anticipated to start in summer 2020. The current engineer's estimate for construction is \$14 million. The new Ridge Trail Extension is scheduled to be open by the end of 2021.

Planned North San Andreas Trail Connector

This trail connection will provide 1.25 miles of new trail from San Mateo County's North San Andreas Trail to GGNRA's Sweeney Ridge property at the Sneath Lane gate (see Peninsula Watershed Trails map, "Planned North San Andreas Connector"). The trail would be on SFPUC Peninsula Watershed lands and connect existing trails operated by San Mateo County Parks and GGNRA. The trail will be multi-modal and provide access to hikers, bikers and equestrians. The design was initiated July 2013 and is expected to be completed by Summer 2020. Environmental review and final design would then be initiated, with construction targeted for Summer 2022. This trail connector was described in the PWMP Final EIR (2001) and Final PWMP (2002).

Crystal Springs Regional Trail

In November 2013 the SFPUC approved a Memorandum of Understanding (MOU) with San Mateo County to contribute funding to trail improvements on the Crystal Springs Regional Trail, which is operated and maintained by San Mateo County Parks. The funds were used for the construction of security and watershed fencing for the South of Lower Crystal Springs Dam to Highway 92 segment in 2014. This newly constructed trail segment helps close one of the remaining gaps in what will eventually be a 15 mile continuous trail in the Peninsula Watershed (see Peninsula Watershed Trails map, "Crystal Springs Regional Trail").

Proposed Whiting Ridge Connector

This trail connection was not included in the PWMP Final EIR (2001) or Final PWMP (2002); it was presented in the GGNRA General Management Plan Final Environmental Impact Statement (2014). The Peninsula Open Space Trust and GGNRA have recently acquired additional properties to the west of the SFPUC Peninsula Watershed, and have started to provide public access (e.g., Rancho Corral de Tierra) on these immediately adjacent lands. No construction of trails would be required (as proposed, the trail would use the existing access road), but there would need to be environmental review and potentially an agreement among the GGNRA and SMC Parks regarding operations, maintenance, and management of this trail system. SFPUC staff have begun discussions with staff from these agencies, but the timing and specifics of this project still need to be developed.

Montara Mountain

On August 26, 2019 Water Enterprise staff met with the community members who attended the August 13, 2019 Commission meeting. This meeting allowed Water Enterprise staff to provide additional information related to ongoing and future work at North Peak, and also for the community members to expand on their interests. We agreed at this meeting to develop a conceptual proposal to provide limited access to North Peak only, and to share this proposal with the same community members to collect their feedback. Any proposal would be required to go through the environmental review process, including the California Environmental Quality Act (CEQA). This trail project was not included in the PWMP Final EIR (2001) or Final PWMP (2002).

Water Enterprise staff are scheduled to meet with these community members on October 4, 2019 at North Peak to share a conceptual education and public access proposal at this location. The current road that leads to North Peak on

SFPUC property will not be used by vehicles in the future servicing the Montara Mountain Rainfall Prediction, SFPUC Radio, and existing San Mateo County radio facilities. Instead, a new road is currently being constructed entirely on SFPUC property as provided in the PWMP Final EIR (2001) and Final PWMP (2002) that will provide this access.

The current road could be used by hikers/runners only to access SFPUC property and arrive at the "Potential Vista Point" as seen on the Montara Mountain Trail Access map. This is slightly below the North Peak elevation but does provide the same views towards the east bay (e.g., Mount Diablo) and south down the coast as seen from North Peak. Consistent with the Peninsula Watershed Trails Interpretive Master Plan, the proposal will also include two interpretive panels: one would describe the SFPUC water system, and specifically the role of the Peninsula Watershed in providing our customers with a high quality and reliable water supply; and the other would describe the important, unique, and rare ecological resources that are found along the trail and near the peak. A third interpretive panel might also describe the importance of the facilities at North Peak, and their role in providing communication to public safety staff and improved forecasting to Bay Area water managers and local public agencies (i.e., emergency response to local flooding).

Natural Resources and Lands Management staff have also reached out to Peninsula Working Group members (San Mateo County Parks, the GGNRA, California State Parks, Peninsula Open Space Trust, Midpeninsula Regional Open Space District, and the California Coastal Conservancy) to share these plans and to ensure consistent information about public access is provided to trail users. Trail users need to traverse San Mateo County Parks, State Parks, GGNRA, and American Tower property before arriving at SFPUC property near North Peak (see the inset in the upper right corner of the Montara Mountain Trail Access map). Natural Resources and Lands Management staff have been working with these PWG members to confirm the information and materials provided to the public accurately describe existing access policies of all landowners.

After the October 4, 2019 site visit, Natural Resources and Lands Management staff will continue to refine this conceptual proposal, and provide SF City Planning with a project description to start the environmental review process. SFPUC construction of the new access road and Montara Mountain Rainfall Prediction and Radio Project will continue for the next several months, and it's important for these details to be finalized to confirm the specifics of the "Potential Vista Point" area. How public access is managed at this remote location in the watershed will also need to be part of the project description. In

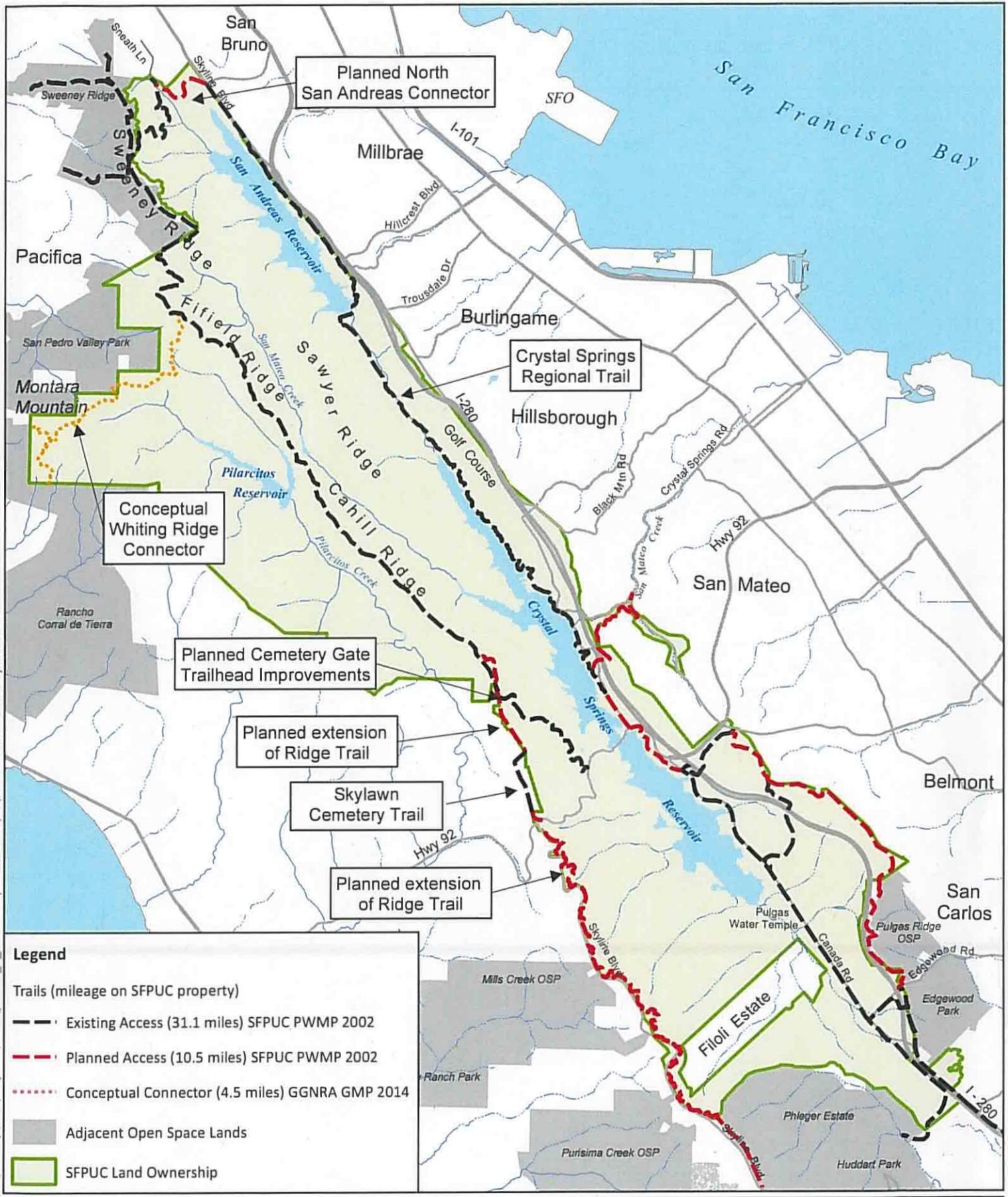
addition to the interpretive panels, Natural Resource and Lands Management staff are considering a pilot permit program similar to the one included in the Ridge Trail Extension Project. Trail users would go to the SFPUC public website to acquire the permit, and as part of this process receive information about why the SFPUC owns this property and important criteria that guide its management, including protection of drinking water quality and environmental stewardship. Once trail users have this information, they would be provided a permit that they would carry with them and provide upon request when on SFPUC watershed land at this location. This would provide trail users access during operational hours, consistent with the other landowners along the trail, without requiring SFPUC staff to be present. Natural Resources and Lands Management staff would continue to patrol this area, in coordination with the other PWG members with property in the immediate vicinity.

Water Enterprise staff will be available to answer questions at the October 8, 2019 meeting, and will continue to provide regular updates to the Commission as requested.

Attachments

- Watershed Trails Map
- Montara Mountain Trail Access

H:\Jeremy\Pen\Projects\Trails\pTrails_4_AnnualReport.mxd 9/30/2019 2:47:17 PM jlukins



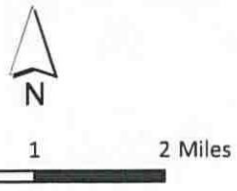
Legend

Trails (mileage on SFPUC property)

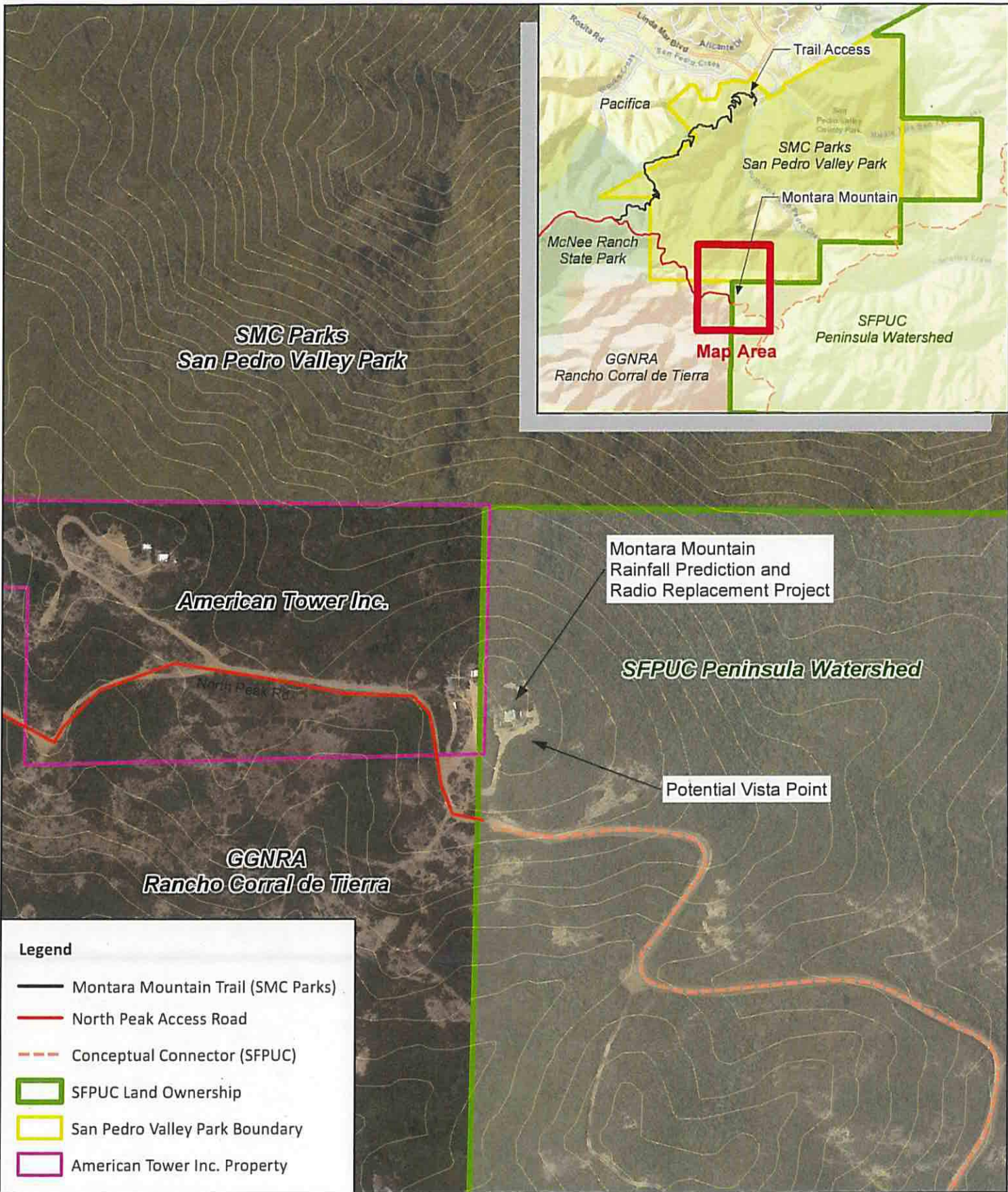
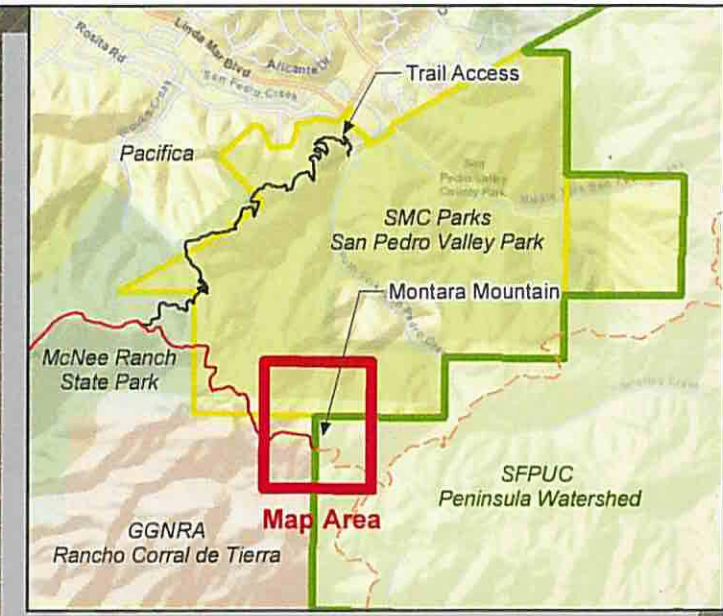
- Existing Access (31.1 miles) SFPUC PWMP 2002
- Planned Access (10.5 miles) SFPUC PWMP 2002
- Conceptual Connector (4.5 miles) GGNRA GMP 2014

Adjacent Open Space Lands

SFPUC Land Ownership



H:\Jeremy\Pen\Projects\Trails\pTrails_MontaraMtn_detail.mxd jenkins 9/30/2019 2:29:53 PM



Legend

- Montara Mountain Trail (SMC Parks)
- North Peak Access Road
- Conceptual Connector (SFPUC)
- SFPUC Land Ownership
- San Pedro Valley Park Boundary
- American Tower Inc. Property

