




# MONTARA WATER AND SANITARY DISTRICT AGENDA

For Meeting Of: **March 8, 2018**

TO: BOARD OF DIRECTORS

FROM: Clemens Heldmaier, General Manager 

**SUBJECT: SAM Flow Report for January 2018**

---

---

The Sewer Authority Mid-Coastside (SAM) has prepared the following attached reports for the SAM Board of Directors and the California Regional Water Quality Control Board:

- Flow Report for January 2018.
- Collection System Monthly Overflow Report – January 2018.

The Average Daily Flow for Montara was 0.373 MGD in January 2018. There was no reportable overflow in January in the Montara System. SAM indicates there were 5.85 inches of rain in January 2018.

RECOMMENDATION:

Review and file.

Attachments

# Sewer Authority Mid-Coastside

Monthly Collection System Activity/SSO Distribution Report, January 2018

January 2018

	Number of S.S.O.'s				
	Total	HMB	GCSD	MWSD	SAM
Roots	0	0	0	0	0
Grease	0	0	0	0	0
Mechanical	0	0	0	0	0
Wet Weather	0	0	0	0	0
Other	0	0	0	0	0
<b>Total</b>	<b>0</b>	<b>0</b>	<b>0</b>	<b>0</b>	<b>0</b>

### 12 Month Moving Total

	12 month rolling Number				
	Total	HMB	GCSD	MWSD	SAM
Roots	0	0	0	0	0
Grease	1	1	0	0	0
Mechanical	5	1	0	0	4
Wet Weather	2	2	0	0	0
Other	3	1	1	1	0
<b>Total</b>	<b>11</b>	<b>5</b>	<b>1</b>	<b>1</b>	<b>4</b>
		<b>45%</b>	<b>9%</b>	<b>9%</b>	<b>36%</b>

### Reportable SSOs

	Reportable Number of S.S.O.'s				
	Total	HMB	GCSD	MWSD	SAM
January 2018	0	0	0	0	0
12 Month Moving Total	11	5	1	1	4

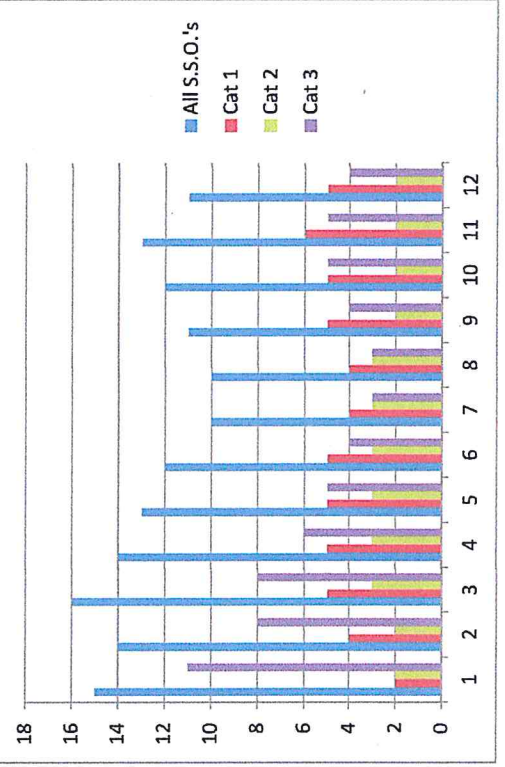
### SSOs / Year / 100 Miles

	Number of S.S.O.'s / Year/100 Miles				
	Total	HMB	GCSD	MWSD	SAM
January 2018	0.0	0.0	0.0	0.0	0.0
12 Month Moving Total	10.5	13.5	3.0	3.7	54.8
Category 1	4.8	8.1	0.0	0.0	27.4
Category 2	1.9	2.7	0.0	0.0	13.7
Category 3	3.8	2.7	3.0	3.7	13.7
Miles of Sewers	104.5	37.0	33.2	27.0	7.3
		<b>35.4%</b>	<b>31.8%</b>	<b>25.8%</b>	<b>7.0%</b>

### 12 Month Rolling Total Sewer Cleaning Summary

Month	HMB	GCSD	MWSD	Total Feet	Total Miles
Feb - 17	12,216	4,866	11,531	28,613	5.4
Mar - 17	15,347	11,667	10,133	37,147	7.0
Apr - 17	13,101	11,588	11,460	36,149	6.8
May - 17	12,044	12,483	9,547	34,074	6.5
June - 17	18,411	17,317	8,567	44,295	8.4
July - 17	28,276	20,290	6,368	54,934	10.4
Aug - 17	21,769	22,465	20,044	64,278	12.2
Sep - 17	18,710	17,419	11,347	47,476	9.0
Oct - 17	19,336	11,871	14,696	45,903	8.7
Nov - 17	17,854	23,041	9,978	50,873	9.6
Dec - 17	31,661	14,103	9,810	55,574	10.5
Jan - 18	26,653	13,069	11,444	51,166	9.7
<b>Annual ft</b>	<b>235,378</b>	<b>180,179</b>	<b>134,925</b>	<b>550,482</b>	
<b>Annual Mi.</b>	<b>44.6</b>	<b>34.1</b>	<b>25.6</b>		<b>104.3</b>

12 Month Moving SSO Totals Through January 2018



Attachment A

Flow Distribution Report Summary For January 2018

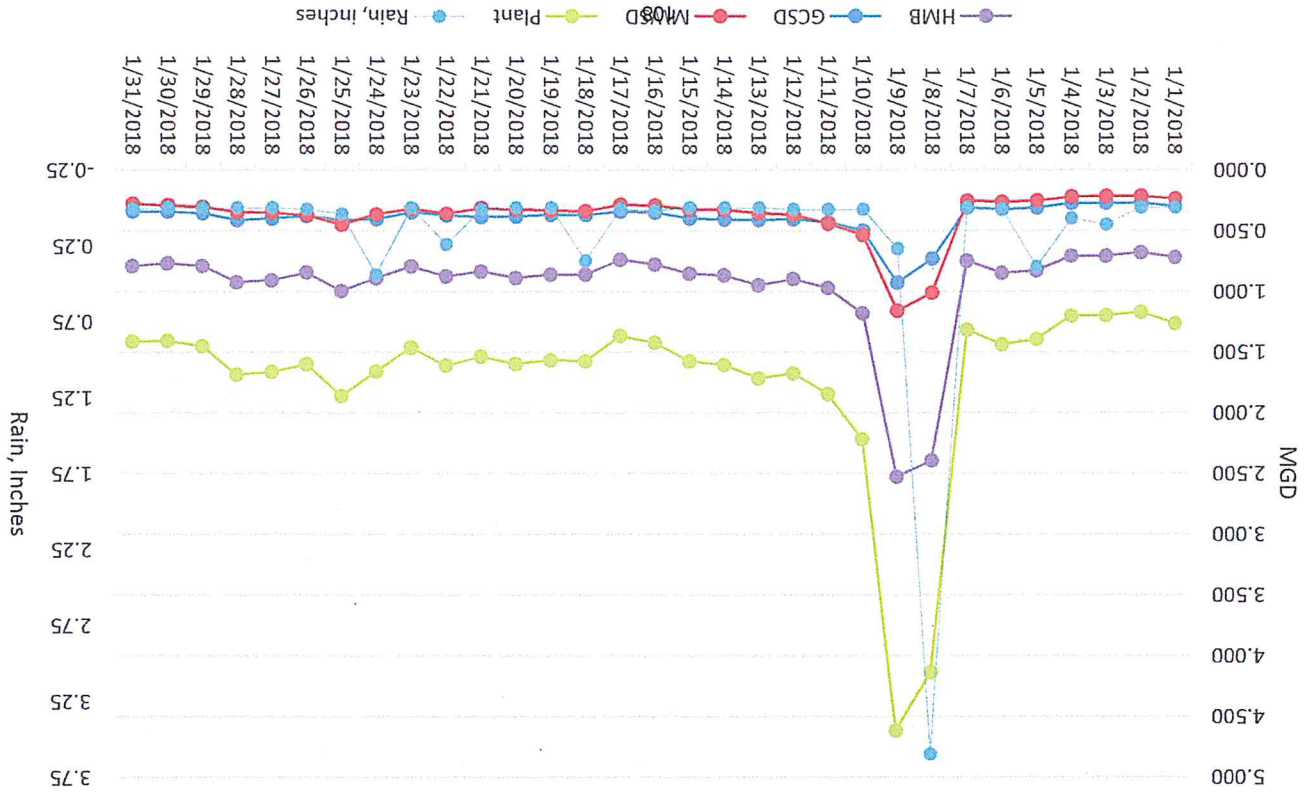
The daily flow report figures for the month of January 2018 have been converted to an Average

Daily Flow (ADF) for each Member Agency. The results are attached for your review.

The summary of the ADF information is as follows:

	<u>MGD</u>	<u>%</u>
The City of Half Moon Bay	0.950	55.2%
Granada Community Services District	0.396	23.1%
Montara Water and Sanitary District	<u>0.373</u>	<u>21.7%</u>
Total	1.720	100.0%

Sewer Authority Mid-Coastside  
Monthly Flow Distribution Report, January 2018



# Sewer Authority Mid-Coastside

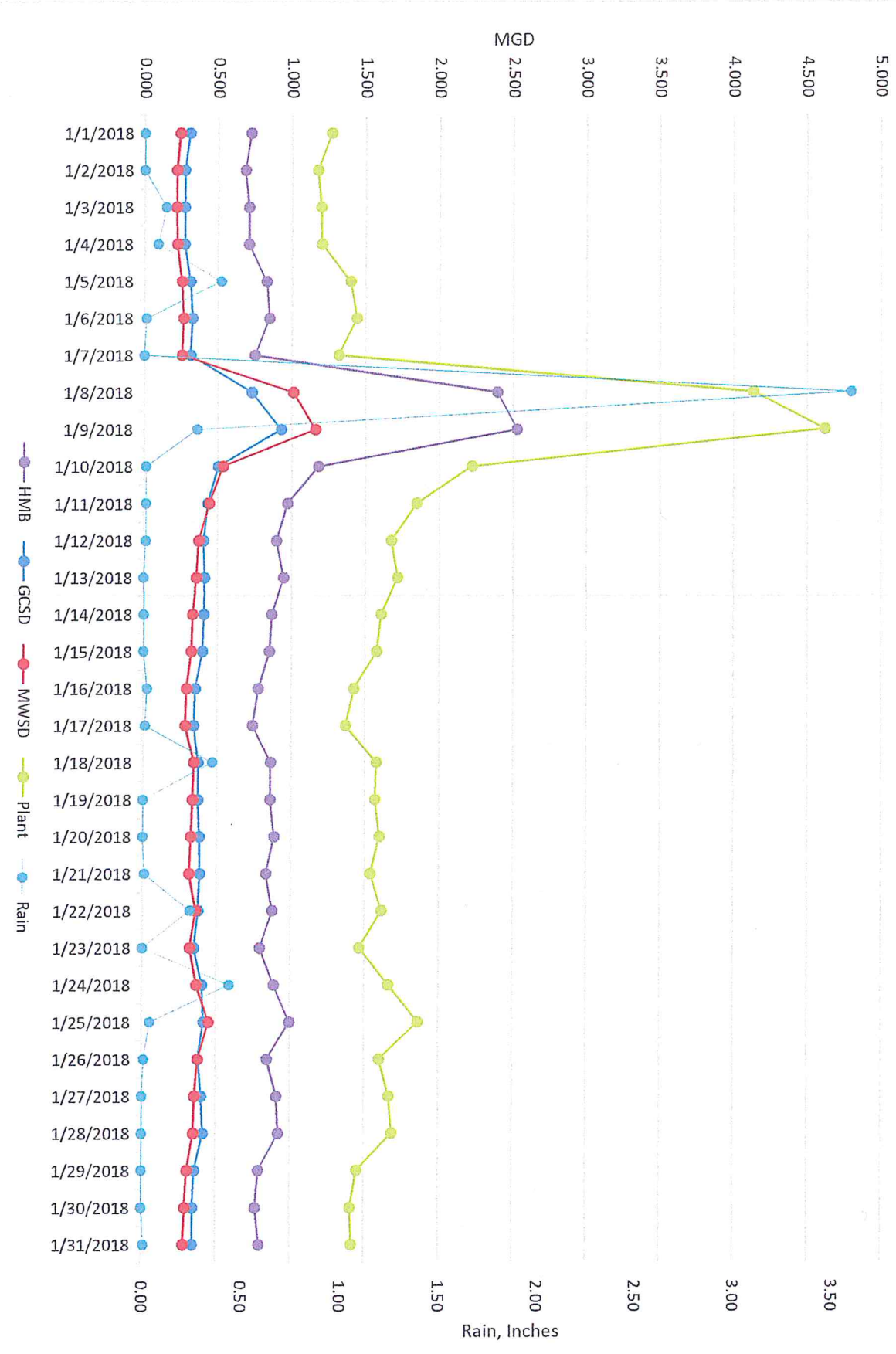
Monthly Flow Distribution Report for January 2018

Date	HMB	GCSD	MWSD	Plant	Plant	Rain	Portola	Rain	Montara
1/1/2018	0.722	0.306	0.241	1.269	0.00	0.00	0.00	0.00	0.00
1/2/2018	0.683	0.273	0.219	1.175	0.00	0.00	0.00	0.00	0.00
1/3/2018	0.709	0.273	0.217	1.199	0.11	0.11	0.00	0.04	0.00
1/4/2018	0.708	0.273	0.223	1.203	0.07	0.06	0.06	0.08	0.08
1/5/2018	0.830	0.312	0.255	1.396	0.39	0.60	0.00	0.53	0.00
1/6/2018	0.849	0.325	0.266	1.440	0.01	0.08	0.00	0.00	0.00
1/7/2018	0.750	0.313	0.256	1.319	0.00	0.00	0.00	0.00	0.00
1/8/2018	2.394	0.731	1.012	4.137	3.60	3.98	0.00	3.36	0.00
1/9/2018	2.528	0.930	1.162	4.620	0.27	0.42	0.32	0.00	0.00
1/10/2018	1.182	0.503	0.536	2.221	0.01	0.07	0.03	0.01	0.00
1/11/2018	0.972	0.432	0.443	1.847	0.01	0.01	0.00	0.00	0.00
1/12/2018	0.899	0.405	0.372	1.676	0.01	0.00	0.00	0.00	0.00
1/13/2018	0.949	0.412	0.357	1.718	0.00	0.00	0.00	0.00	0.00
1/14/2018	0.869	0.408	0.331	1.608	0.00	0.00	0.00	0.00	0.00
1/15/2018	0.853	0.399	0.325	1.578	0.00	0.00	0.00	0.00	0.00
1/16/2018	0.778	0.352	0.294	1.424	0.02	0.03	0.00	0.00	0.00
1/17/2018	0.740	0.343	0.286	1.369	0.01	0.01	0.00	0.00	0.00
1/18/2018	0.863	0.372	0.342	1.577	0.35	0.32	0.45	0.01	0.00
1/19/2018	0.861	0.371	0.336	1.568	0.00	0.00	0.00	0.00	0.00
1/20/2018	0.889	0.384	0.326	1.599	0.00	0.00	0.00	0.00	0.00
1/21/2018	0.835	0.388	0.316	1.539	0.01	0.18	0.02	0.00	0.00
1/22/2018	0.877	0.376	0.361	1.614	0.24	0.31	0.38	0.00	0.00
1/23/2018	0.795	0.350	0.321	1.465	0.00	0.00	0.00	0.00	0.00
1/24/2018	0.891	0.404	0.367	1.662	0.44	0.58	0.51	0.00	0.00
1/25/2018	0.996	0.415	0.450	1.862	0.04	0.04	0.11	0.00	0.00
1/26/2018	0.846	0.378	0.377	1.601	0.01	0.00	0.00	0.00	0.00
1/27/2018	0.910	0.402	0.355	1.667	0.00	0.00	0.00	0.00	0.00
1/28/2018	0.924	0.414	0.349	1.687	0.00	0.00	0.00	0.00	0.00
1/29/2018	0.790	0.357	0.306	1.453	0.00	0.00	0.00	0.00	0.00
1/30/2018	0.768	0.346	0.294	1.409	0.00	0.00	0.00	0.00	0.00
1/31/2018	0.793	0.343	0.280	1.416	0.01	0.00	0.00	0.00	0.00
<b>Totals</b>	<b>29.453</b>	<b>12.291</b>	<b>11.575</b>	<b>53.319</b>	<b>5.61</b>	<b>6.80</b>	<b>5.85</b>		

## Summary

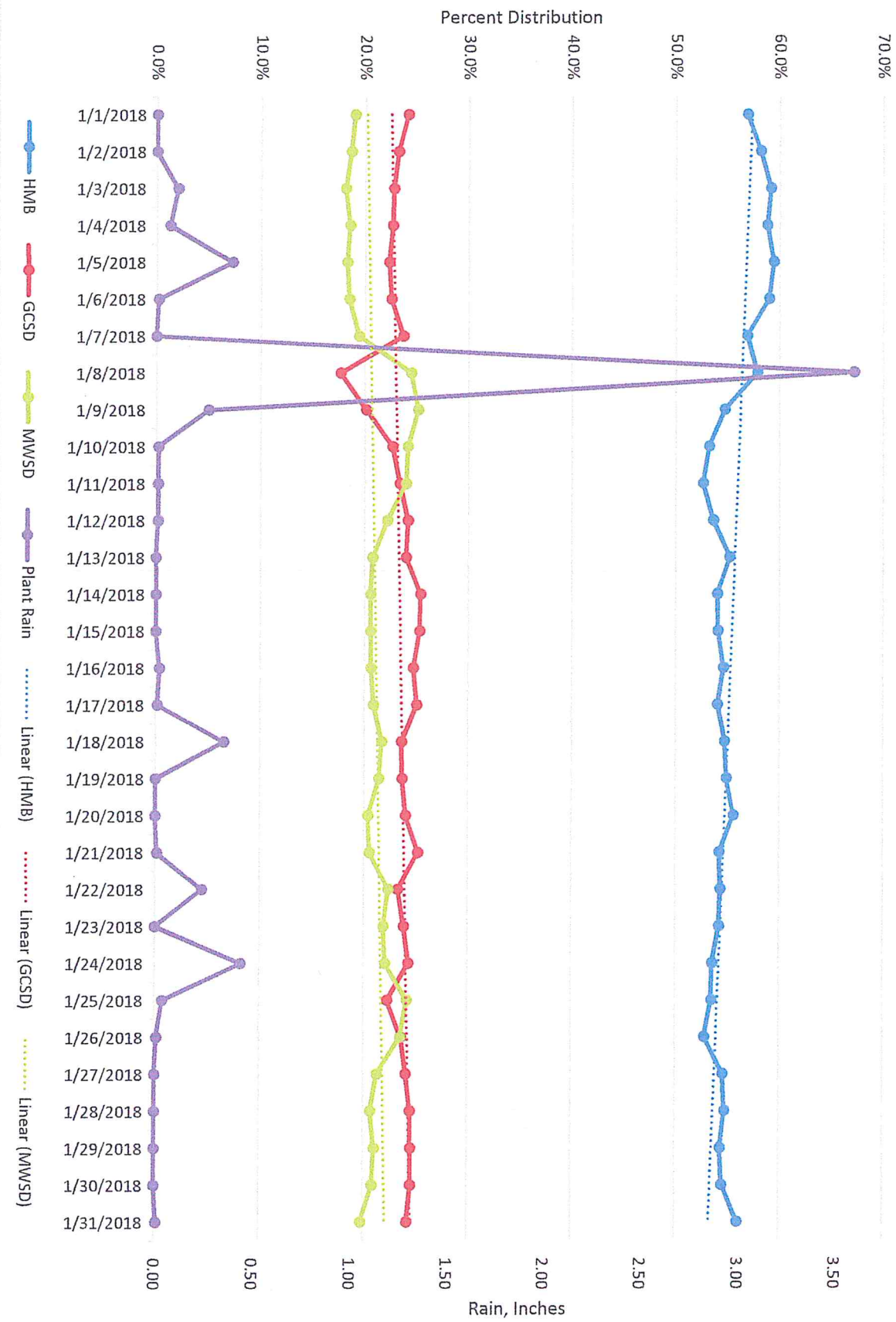
<b>HMB</b>	<b>GCSD</b>	<b>MWSD</b>	<b>Plant</b>
0.683	0.273	0.217	1.175
0.950	0.396	0.373	1.720
2.528	0.930	1.162	4.620
55.2%	23.1%	21.7%	100.0%

# Sewer Authority Mid-Coastside Monthly Flow Distribution Report, January 2018

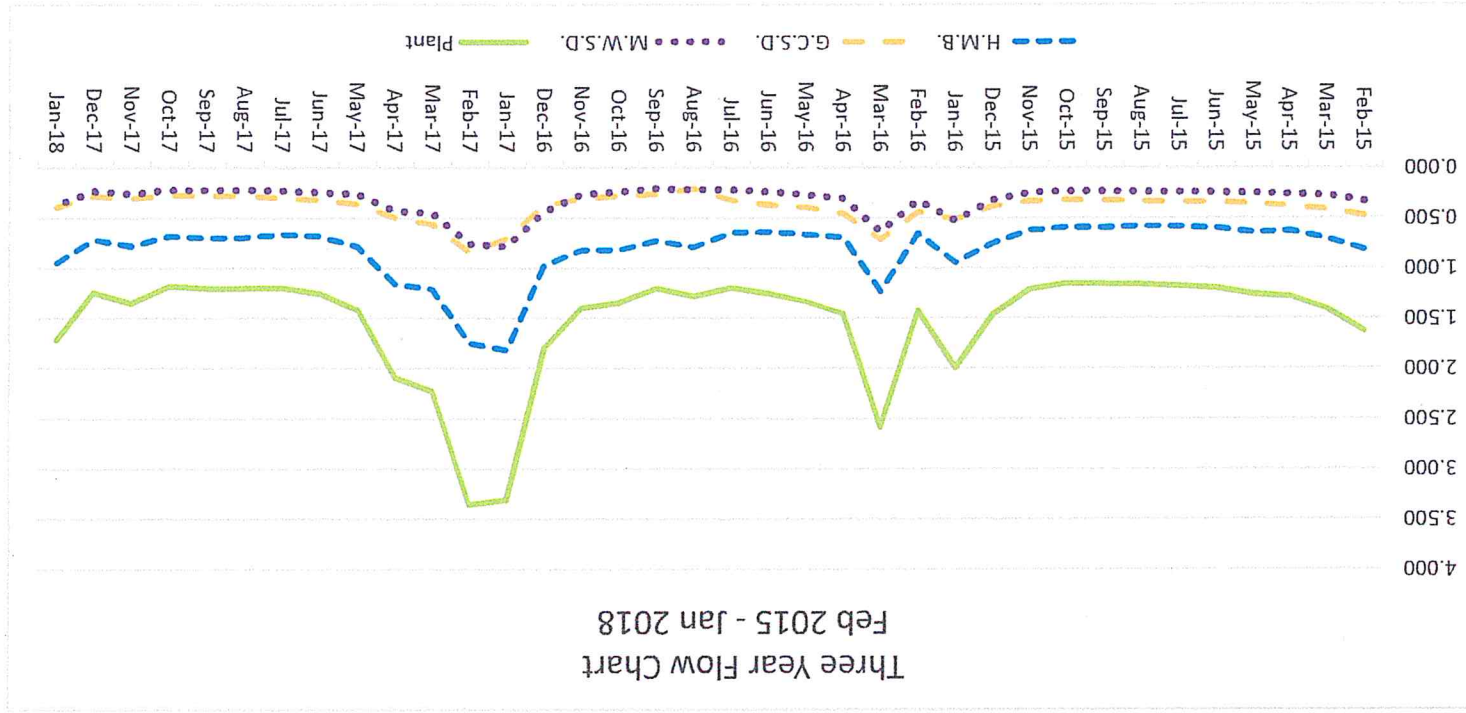
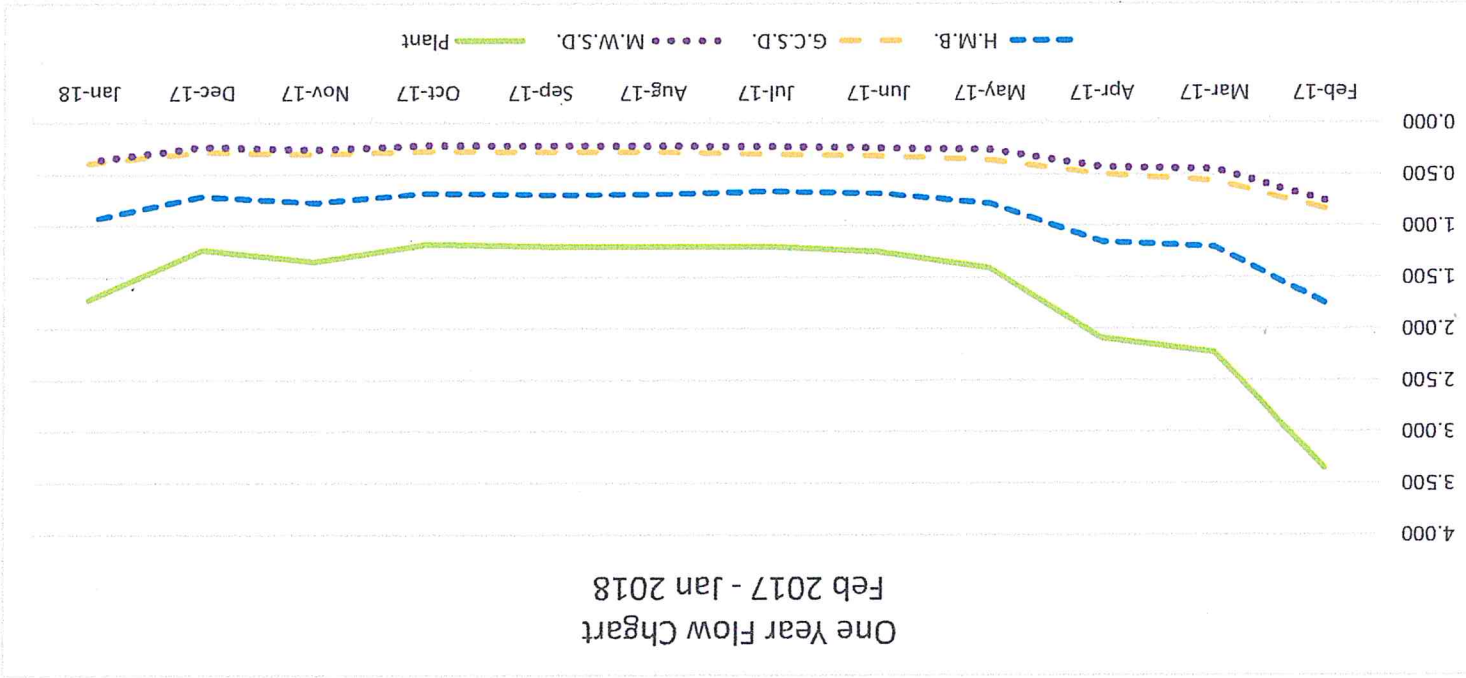




# Percent Distribution January 2018



Most recent flow calibration December 2016 PS, November 2016 Plant



# Flow based percent distribution based for past year

