



# MONTARA WATER AND SANITARY DISTRICT AGENDA

For Meeting Of: **February 1, 2018**

TO: BOARD OF DIRECTORS

FROM: Clemens Heldmaier, General Manager 

**SUBJECT: SAM Flow Report for October and November  
2017**

---

---

The Sewer Authority Mid-Coastside (SAM) has prepared the following attached reports for the SAM Board of Directors and the California Regional Water Quality Control Board:

- Flow Report for October and November 2017.
- Collection System Monthly Overflow Report – October and November 2017.

The Average Daily Flow for Montara was 0.220 MGD in October and 0.263 MGD in November 2017. There was no reportable overflow in October or November in the Montara System. SAM indicates there were 0.37 inches of rain in October and 4.40 inches of rain in November 2017.

## RECOMMENDATION:

Review and file.

Attachments

# Sewer Authority Mid-Coastside

Monthly Collection System Activity/SSO Distribution Report, October 2017

## October 2017

Total	Number of S.S.O.'s			
	HMB	GCSD	MWSD	SAM
Roots	0	0	0	0
Grease	1	0	0	0
Mechanical	0	0	0	0
Wet Weather	0	0	0	0
Other	0	1	0	0
<b>Total</b>	<b>1</b>	<b>1</b>	<b>0</b>	<b>0</b>
	50%	50%		

## 12 Month Moving Total

Total	12 month rolling Number			
	HMB	GCSD	MWSD	SAM
Roots	0	0	0	0
Grease	1	0	0	0
Mechanical	5	0	1	4
Wet Weather	2	0	0	0
Other	0	1	2	0
<b>Total</b>	<b>8</b>	<b>1</b>	<b>2</b>	<b>4</b>
	27%	9%	27%	36%

## Reportable SSOs

Total	Reportable Number of S.S.O.'s			
	HMB	GCSD	MWSD	SAM
October 2017	1	1	0	0
12 Month Moving Total	3	1	3	4

## SSOs / Year / 100 Miles

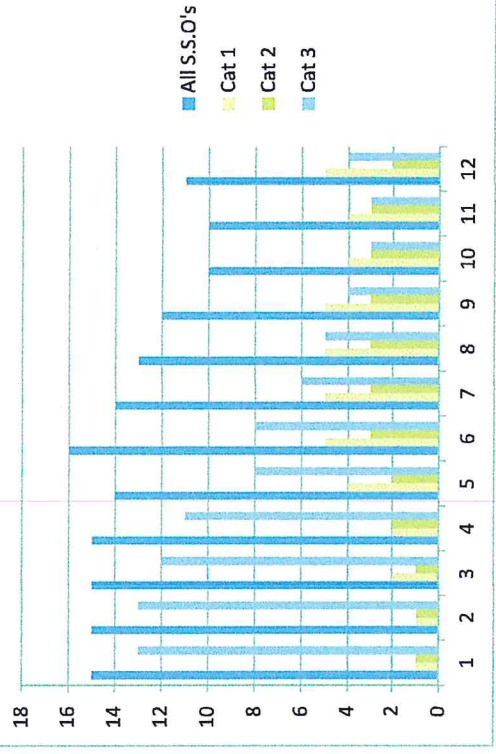
Total	Number of S.S.O.'s / Year/100 Miles			
	HMB	GCSD	MWSD	SAM
October 2017	2.7	3.0	0.0	0.0
12 Month Moving Total	8.1	3.0	11.1	54.8
Category 1	5.4	0.0	3.7	27.4
Category 2	2.7	0.0	0.0	13.7
Category 3	0.0	3.0	7.4	13.7
Miles of Sewers	37.0	33.2	27.0	7.3
	35.4%	31.8%	25.8%	7.0%

## 12 Month Rolling Total Sewer Cleaning Summary

Month	HMB	GCSD	MWSD	Total Feet	Total Miles
Nov - 16	25,535	33,638	10,436	69,609	13.2
Dec - 16	33,928	19,306	10,127	63,361	12.0
Jan - 17	16,650	16,144	11,837	44,631	8.5
Feb - 17	12,216	4,866	11,531	28,613	5.4
Mar - 17	15,347	11,667	10,133	37,147	7.0
Apr - 17	13,101	11,588	11,460	36,149	6.8
May - 17	12,044	12,483	9,547	34,074	6.5
June - 17	18,411	17,317	8,567	44,295	8.4
July - 17	28,276	20,290	6,368	54,934	10.4
Aug - 17	21,769	22,465	20,044	64,278	12.2
Sep - 17	18,710	17,419	11,347	47,476	9.0
Oct - 17	19,336	11,871	14,696	45,903	8.7
<b>Annual ft</b>	<b>235,323</b>	<b>199,054</b>	<b>136,093</b>	<b>570,470</b>	

<b>Annual Mi.</b>	<b>44.6</b>	<b>37.7</b>	<b>25.8</b>	<b>108.0</b>
-------------------	-------------	-------------	-------------	--------------

## 12 Month Moving SSO Totals Through October 2017



## Attachment A

### Flow Distribution Report Summary For October 2017

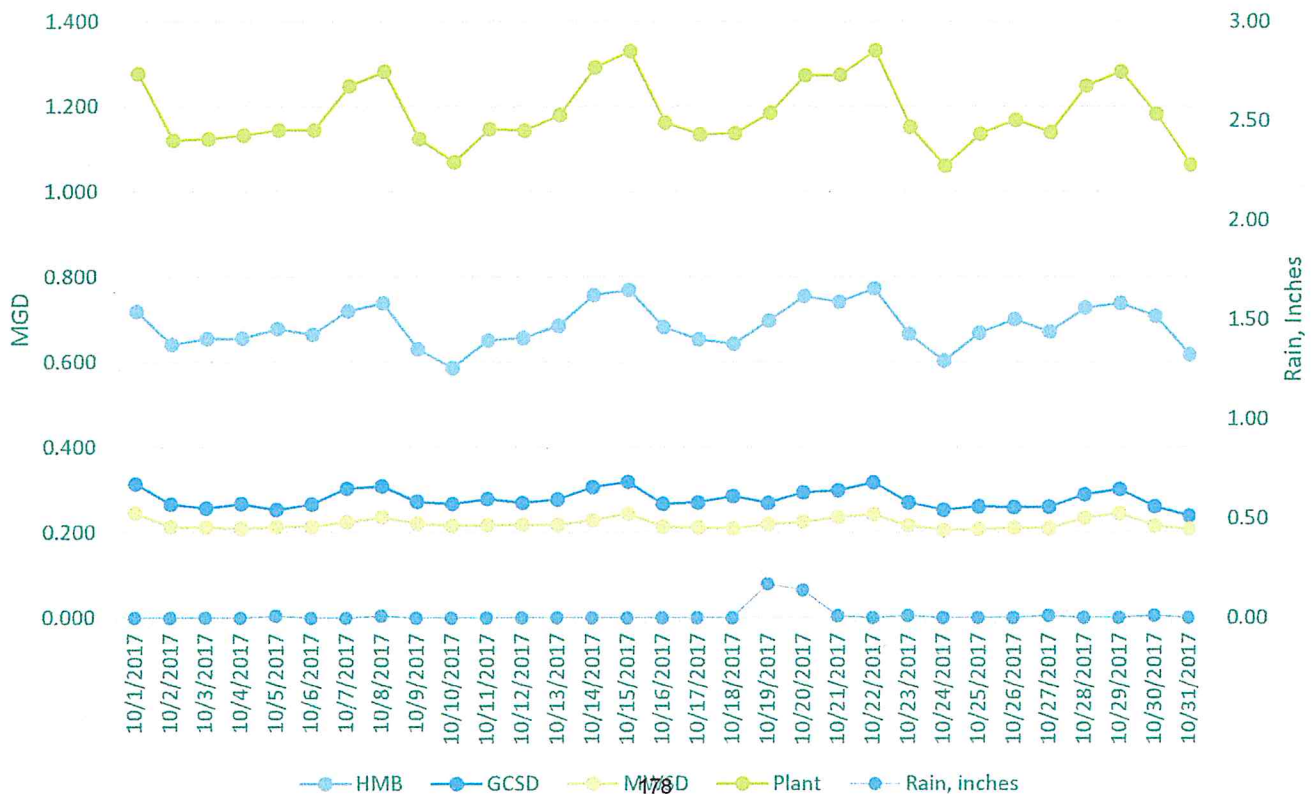
The daily flow report figures for the month of October 2017  
have been converted to an Average

Daily Flow (ADF) for each Member Agency.  
The results are attached for your review.

The summary of the ADF information is as follows:

	<u>MGD</u>	<u>%</u>
The City of Half Moon Bay	0.685	57.9%
Granada Community Services District	0.278	23.5%
Montara Water and Sanitary District	<u>0.220</u>	<u>18.6%</u>
<b>Total</b>	<b>1.183</b>	<b>100.0%</b>

### Sewer Authority Mid-Coastside Monthly Flow Distribution Report, October 2017



# Sewer Authority Mid-Coastside

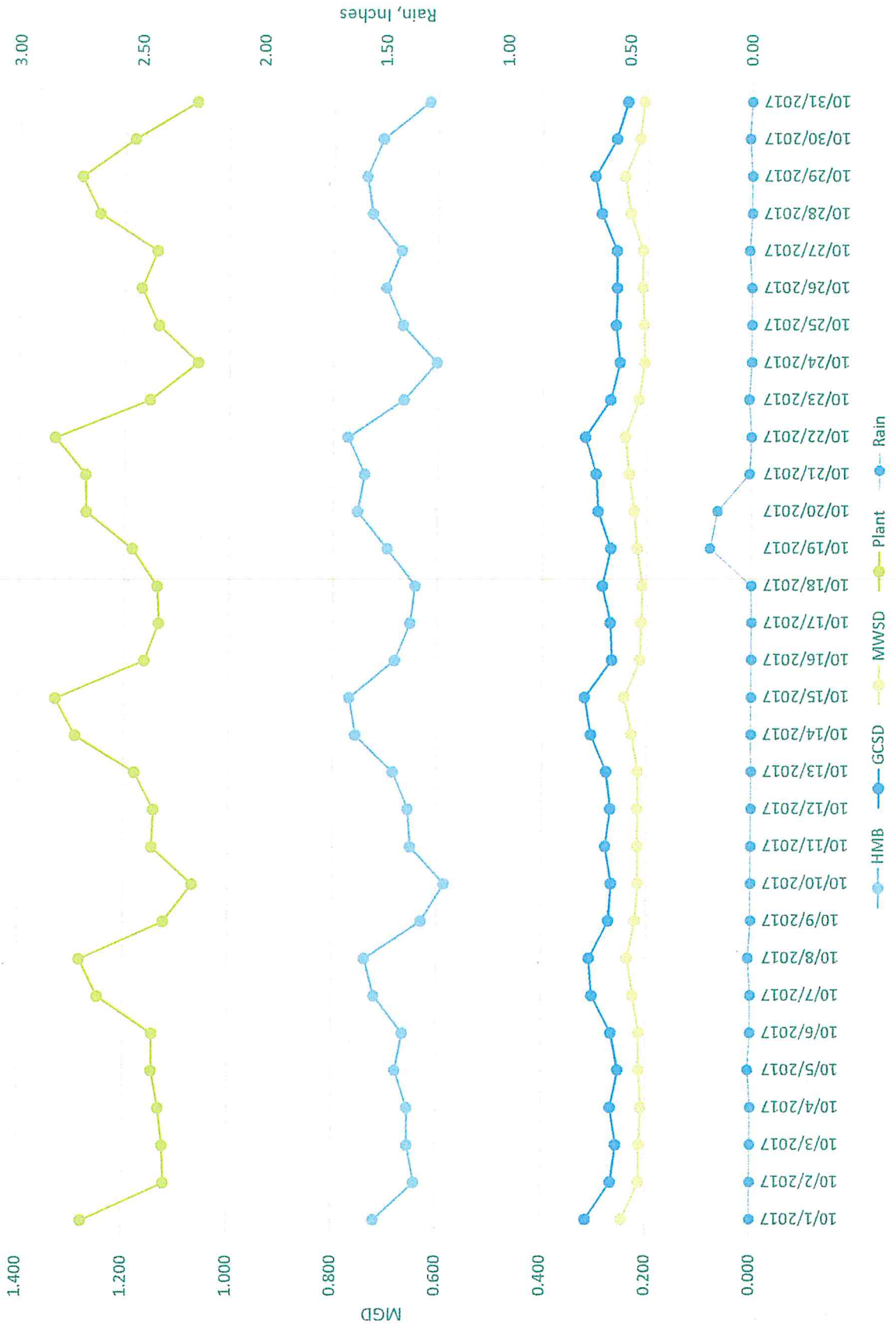
## Monthly Flow Distribution Report for October 2017

<u>Date</u>	<u>HMB</u>	<u>GCSD</u>	<u>MWSD</u>	<u>Plant</u>	<u>Rain Plant</u>	<u>Rain Portola</u>	<u>Rain Montara</u>
10/1/2017	0.718	0.314	0.245	1.277	0.00	0.00	0.00
10/2/2017	0.641	0.266	0.213	1.121	0.00	0.00	0.00
10/3/2017	0.655	0.257	0.212	1.124	0.00	0.00	0.00
10/4/2017	0.656	0.267	0.209	1.132	0.00	0.00	0.00
10/5/2017	0.678	0.253	0.213	1.145	0.01	0.00	0.00
10/6/2017	0.664	0.266	0.213	1.144	0.00	0.00	0.00
10/7/2017	0.720	0.303	0.225	1.248	0.00	0.00	0.00
10/8/2017	0.738	0.309	0.236	1.283	0.01	0.00	0.00
10/9/2017	0.630	0.272	0.221	1.124	0.00	0.00	0.00
10/10/2017	0.586	0.267	0.216	1.069	0.00	0.00	0.00
10/11/2017	0.651	0.279	0.217	1.146	0.00	0.00	0.00
10/12/2017	0.656	0.269	0.218	1.143	0.00	0.00	0.00
10/13/2017	0.685	0.278	0.217	1.180	0.00	0.00	0.00
10/14/2017	0.757	0.306	0.229	1.292	0.00	0.00	0.00
10/15/2017	0.769	0.318	0.243	1.330	0.00	0.00	0.00
10/16/2017	0.682	0.267	0.213	1.162	0.00	0.00	0.00
10/17/2017	0.653	0.270	0.211	1.134	0.00	0.00	0.00
10/18/2017	0.643	0.285	0.209	1.137	0.00	0.00	0.00
10/19/2017	0.697	0.269	0.219	1.185	0.17	0.17	0.19
10/20/2017	0.754	0.294	0.225	1.273	0.14	0.24	0.18
10/21/2017	0.741	0.298	0.235	1.274	0.01	0.00	0.00
10/22/2017	0.772	0.318	0.242	1.332	0.00	0.00	0.00
10/23/2017	0.665	0.270	0.216	1.152	0.01	0.00	0.00
10/24/2017	0.603	0.253	0.205	1.060	0.00	0.00	0.00
10/25/2017	0.668	0.260	0.207	1.136	0.00	0.00	0.00
10/26/2017	0.700	0.259	0.210	1.168	0.00	0.00	0.00
10/27/2017	0.671	0.259	0.209	1.139	0.01	0.00	0.00
10/28/2017	0.727	0.288	0.233	1.248	0.00	0.00	0.00
10/29/2017	0.738	0.301	0.244	1.282	0.00	0.00	0.00
10/30/2017	0.707	0.260	0.215	1.182	0.01	0.00	0.00
10/31/2017	0.617	0.239	0.207	1.063	0.00	0.00	0.00
<b>Totals</b>	<b>21.241</b>	<b>8.616</b>	<b>6.827</b>	<b>36.684</b>	<b>0.37</b>	<b>0.41</b>	<b>0.37</b>

### Summary

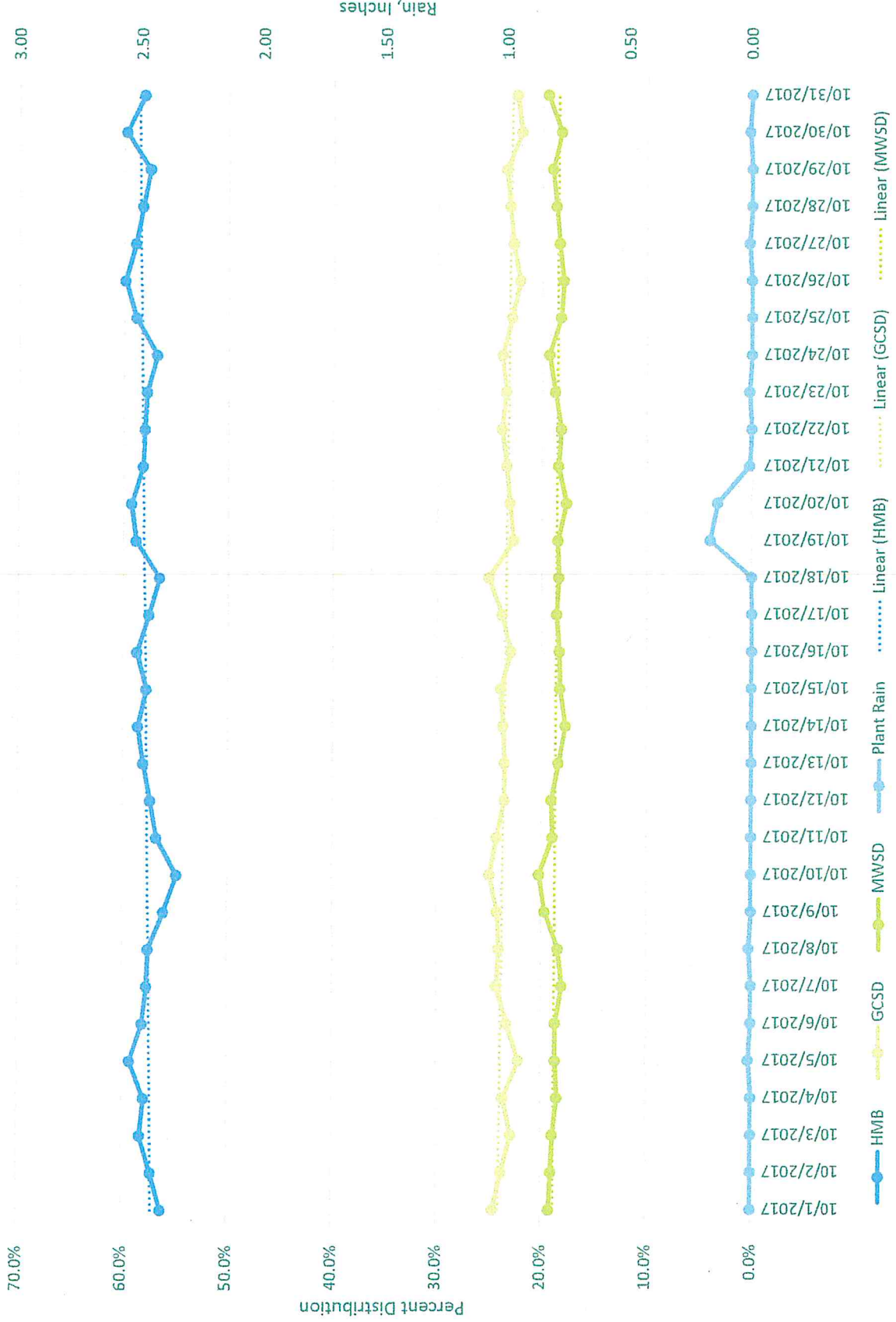
	<u>HMB</u>	<u>GCSD</u>	<u>MWSD</u>	<u>Plant</u>
Minimum	0.586	0.239	0.205	1.060
<b>Average</b>	<b>0.685</b>	<b>0.278</b>	<b>0.220</b>	<b>1.183</b>
Maximum	0.772	0.318	0.245	1.332
<b>Distribution</b>	<b>57.9%</b>	<b>23.5%</b>	<b>18.6%</b>	<b>100.0%</b>

# Sewer Authority Mid-Coastside Monthly Flow Distribution Report, October 2017



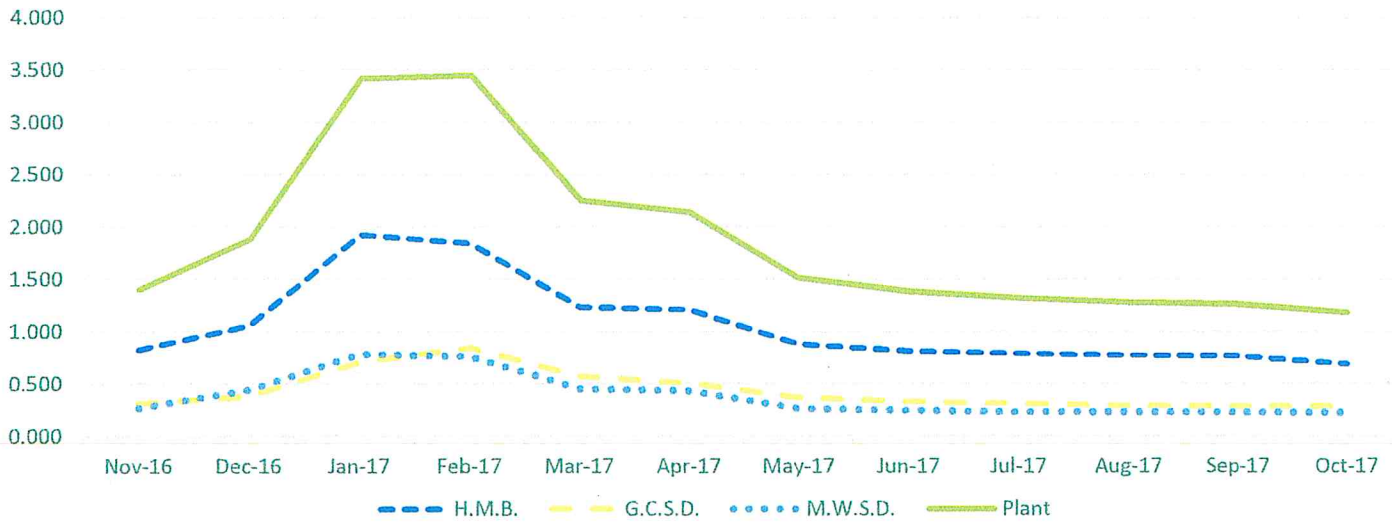


### Percent Distribution October 2017

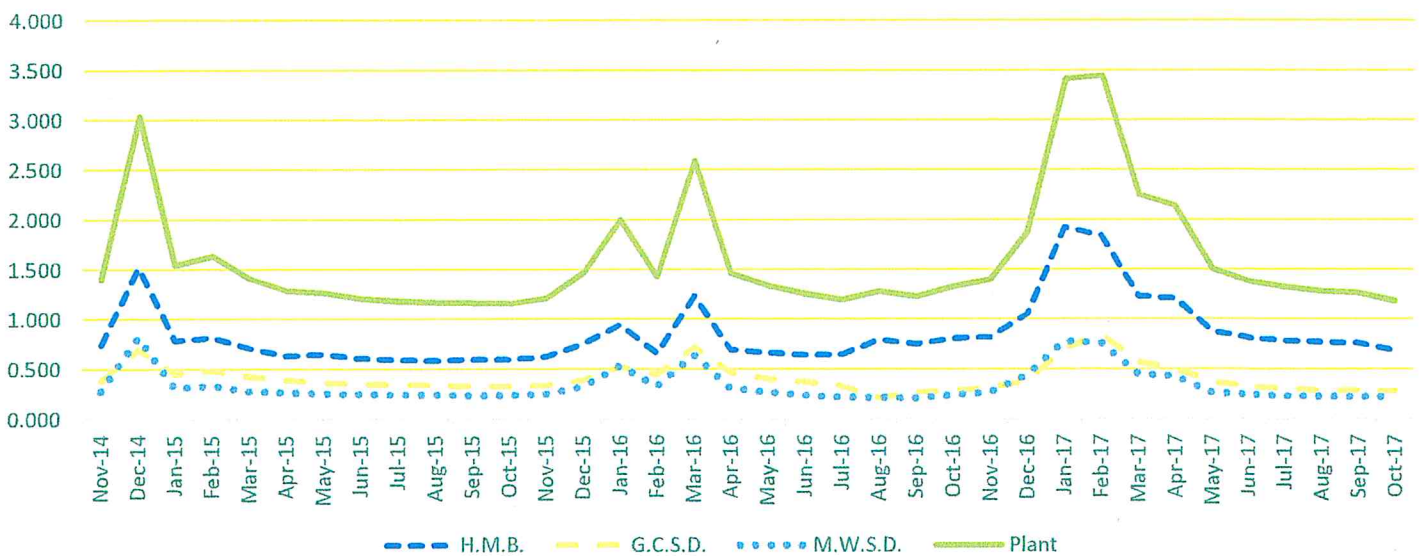


Most recent flow calibration December 2016 PS, November 2016 Plant

One Year Flow Chart  
Nov 2016 - Oct 2017

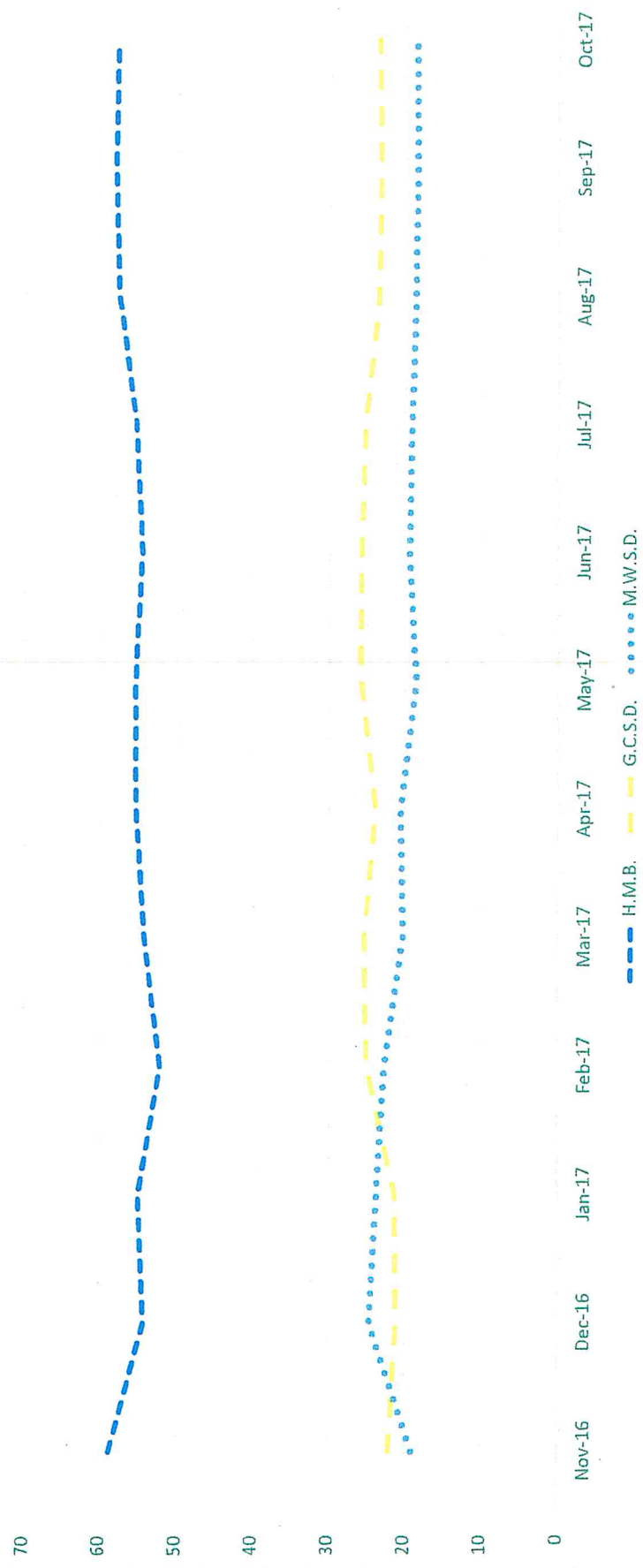


3 Year Flow Chart  
Nov 2014 - Oct 2017



# Flow based percent distribution based for past year

1 year Distribution by %  
Nov 2016 - Oct 2017





# Sewer Authority Mid-Coastside

Monthly Collection System Activity/SSO Distribution Report, November 2017

Attachment C

### November 2017

Total	Number of S.S.O's			SAM
	HMB	GCSO	MWSD	
Roots	0	0	0	0
Grease	1	0	0	0
Mechanical	0	0	0	0
Wet Weather	0	0	0	0
Other	0	0	0	0
<b>Total</b>	<b>1</b>	<b>0</b>	<b>0</b>	<b>0</b>
	<b>100%</b>			

### 12 Month Moving Total

Total	12 month rolling Number			SAM
	HMB	GCSO	MWSD	
Roots	0	0	0	0
Grease	1	0	0	0
Mechanical	5	0	1	4
Wet Weather	2	0	0	0
Other	1	1	2	0
<b>Total</b>	<b>12</b>	<b>1</b>	<b>3</b>	<b>4</b>
	<b>33%</b>	<b>8%</b>	<b>25%</b>	<b>33%</b>

### Reportable SSOs

Total	Reportable Number of S.S.O.'s			SAM
	HMB	GCSO	MWSD	
November 2017	1	0	0	0
12 Month Moving Total	4	1	3	4

### SSOs / Year / 100 Miles

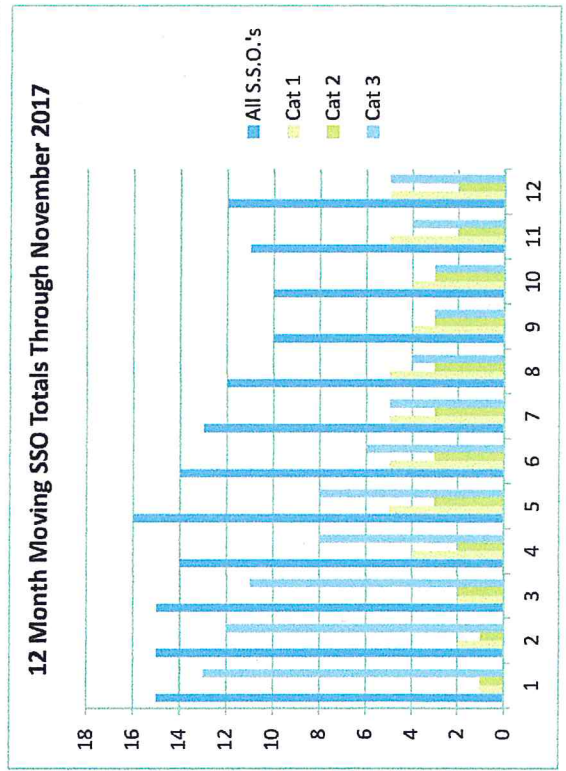
Total	Number of S.S.O.'s / Year/100 Miles			SAM
	HMB	GCSO	MWSD	
November 2017	2.7	0.0	0.0	0.0
12 Month Moving Total	10.8	3.0	11.1	54.8
Category 1	5.4	0.0	3.7	27.4
Category 2	2.7	0.0	0.0	13.7
Category 3	2.7	3.0	7.4	13.7
Miles of Sewers	104.5	33.2	27.0	7.3
	<b>35.4%</b>	<b>31.8%</b>	<b>25.8%</b>	<b>7.0%</b>

### 12 Month Rolling Total Sewer Cleaning Summary

Month	HMB	GCSO	MWSD	Total Feet	Total Miles
Dec - 16	33,928	19,306	10,127	63,361	12.0
Jan - 17	16,650	16,144	11,837	44,631	8.5
Feb - 17	12,216	4,866	11,531	28,613	5.4
Mar - 17	15,347	11,667	10,133	37,147	7.0
Apr - 17	13,101	11,588	11,460	36,149	6.8
May - 17	12,044	12,483	9,547	34,074	6.5
June - 17	18,411	17,317	8,567	44,295	8.4
July - 17	28,276	20,290	6,368	54,934	10.4
Aug - 17	21,769	22,465	20,044	64,278	12.2
Sep - 17	18,710	17,419	11,347	47,476	9.0
Oct - 17	19,336	11,871	14,696	45,903	8.7
Nov - 17	17,854	23,041	9,978	50,873	9.6
<b>Annual ft.</b>	<b>227,642</b>	<b>188,457</b>	<b>135,635</b>	<b>551,734</b>	

Annual Mi.	43.1	35.7	25.7	104.5
------------	------	------	------	-------

12 Month Moving SSO Totals Through November 2017



## Attachment A

### Flow Distribution Report Summary For November 2017

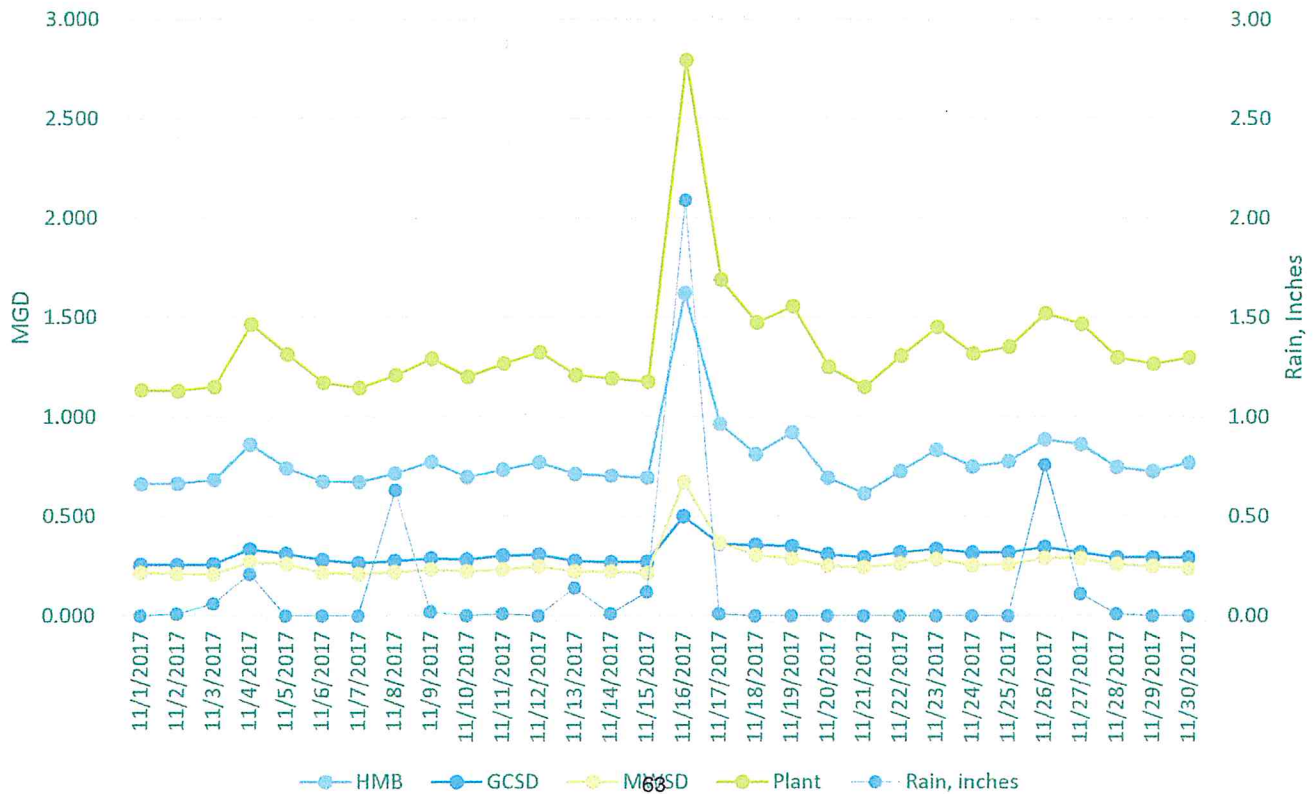
The daily flow report figures for the month of November 2017  
have been converted to an Average

Daily Flow (ADF) for each Member Agency.  
The results are attached for your review.

The summary of the ADF information is as follows:

	<u>MGD</u>	<u>%</u>
The City of Half Moon Bay	0.782	57.8%
Granada Community Services District	0.307	22.7%
Montara Water and Sanitary District	<u>0.263</u>	<u>19.4%</u>
<b>Total</b>	<b>1.352</b>	<b>100.0%</b>

### Sewer Authority Mid-Coastside Monthly Flow Distribution Report, November 2017



# Sewer Authority Mid-Coastside

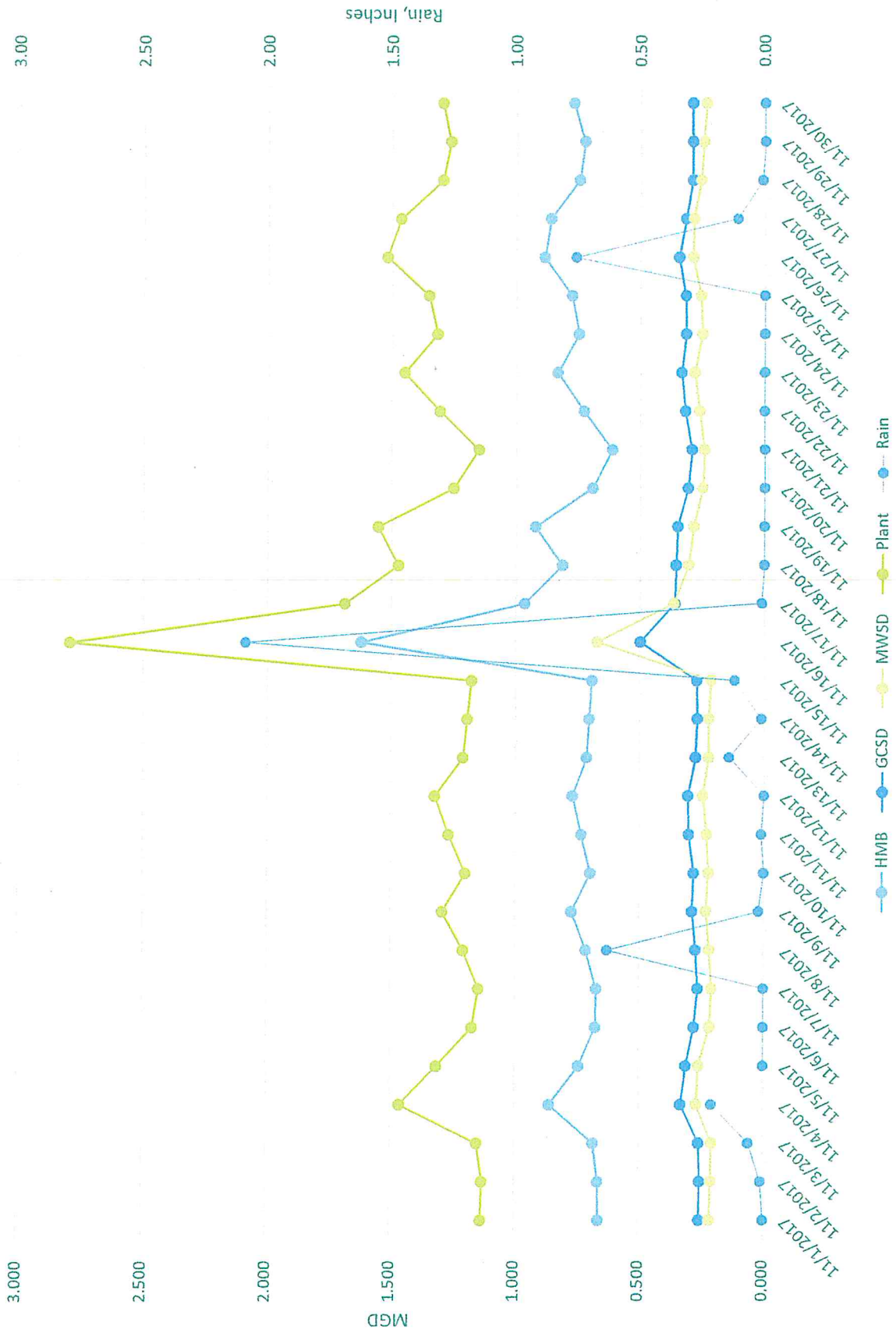
## Monthly Flow Distribution Report for November 2017

<u>Date</u>	<u>HMB</u>	<u>GCSD</u>	<u>MWSD</u>	<u>Plant</u>	<u>Rain Plant</u>	<u>Rain Portola</u>	<u>Rain Montara</u>
11/1/2017	0.662	0.257	0.215	1.134	0.00	0.00	0.00
11/2/2017	0.664	0.255	0.211	1.130	0.01	0.00	0.00
11/3/2017	0.684	0.259	0.208	1.151	0.06	0.04	0.00
11/4/2017	0.861	0.333	0.270	1.464	0.21	0.52	0.77
11/5/2017	0.743	0.311	0.260	1.314	0.00	0.00	0.00
11/6/2017	0.676	0.279	0.216	1.171	0.00	0.00	0.00
11/7/2017	0.672	0.265	0.209	1.146	0.00	0.00	0.00
11/8/2017	0.716	0.274	0.219	1.209	0.63	0.35	0.32
11/9/2017	0.773	0.288	0.232	1.293	0.02	0.02	0.00
11/10/2017	0.697	0.282	0.222	1.201	0.00	0.00	0.01
11/11/2017	0.735	0.302	0.231	1.268	0.01	0.00	0.00
11/12/2017	0.771	0.307	0.247	1.325	0.00	0.00	0.00
11/13/2017	0.713	0.275	0.222	1.210	0.14	0.22	0.17
11/14/2017	0.704	0.269	0.221	1.193	0.01	0.02	0.00
11/15/2017	0.693	0.271	0.213	1.177	0.12	0.08	0.18
11/16/2017	1.623	0.500	0.672	2.795	2.09	2.08	2.45
11/17/2017	0.965	0.361	0.364	1.690	0.01	0.00	0.00
11/18/2017	0.813	0.356	0.305	1.473	0.00	0.00	0.00
11/19/2017	0.922	0.349	0.285	1.556	0.00	0.00	0.00
11/20/2017	0.693	0.308	0.250	1.251	0.00	0.00	0.00
11/21/2017	0.613	0.293	0.243	1.150	0.00	0.00	0.00
11/22/2017	0.727	0.319	0.261	1.307	0.00	0.00	0.00
11/23/2017	0.834	0.334	0.282	1.450	0.00	0.00	0.00
11/24/2017	0.749	0.317	0.252	1.318	0.00	0.00	0.00
11/25/2017	0.777	0.319	0.257	1.352	0.00	0.00	0.00
11/26/2017	0.886	0.345	0.289	1.520	0.76	0.43	0.34
11/27/2017	0.862	0.318	0.287	1.467	0.11	0.13	0.16
11/28/2017	0.748	0.292	0.258	1.298	0.01	0.00	0.00
11/29/2017	0.726	0.292	0.248	1.266	0.00	0.00	0.00
11/30/2017	0.770	0.292	0.236	1.298	0.00	0.00	0.00
<b>Totals</b>	<b>23.471</b>	<b>9.218</b>	<b>7.885</b>	<b>40.574</b>	<b>4.19</b>	<b>3.89</b>	<b>4.40</b>

### Summary

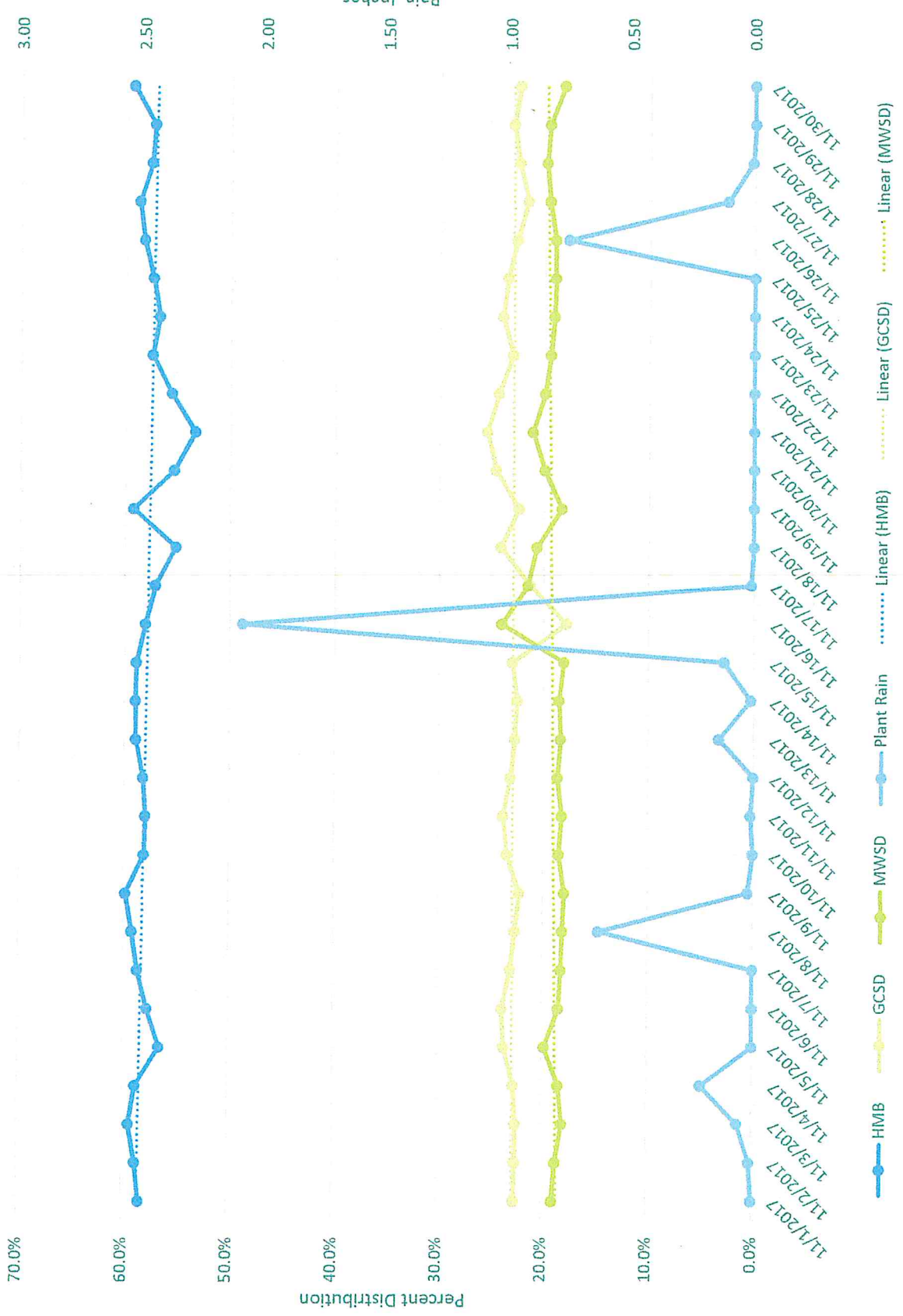
	<u>HMB</u>	<u>GCSD</u>	<u>MWSD</u>	<u>Plant</u>
Minimum	0.613	0.255	0.208	1.130
<b>Average</b>	<b>0.782</b>	<b>0.307</b>	<b>0.263</b>	<b>1.352</b>
Maximum	1.623	0.500	0.672	2.795
<b>Distribution</b>	<b>57.8%</b>	<b>22.7%</b>	<b>19.4%</b>	<b>100.0%</b>

# Sewer Authority Mid-Coastside Monthly Flow Distribution Report, November 2017





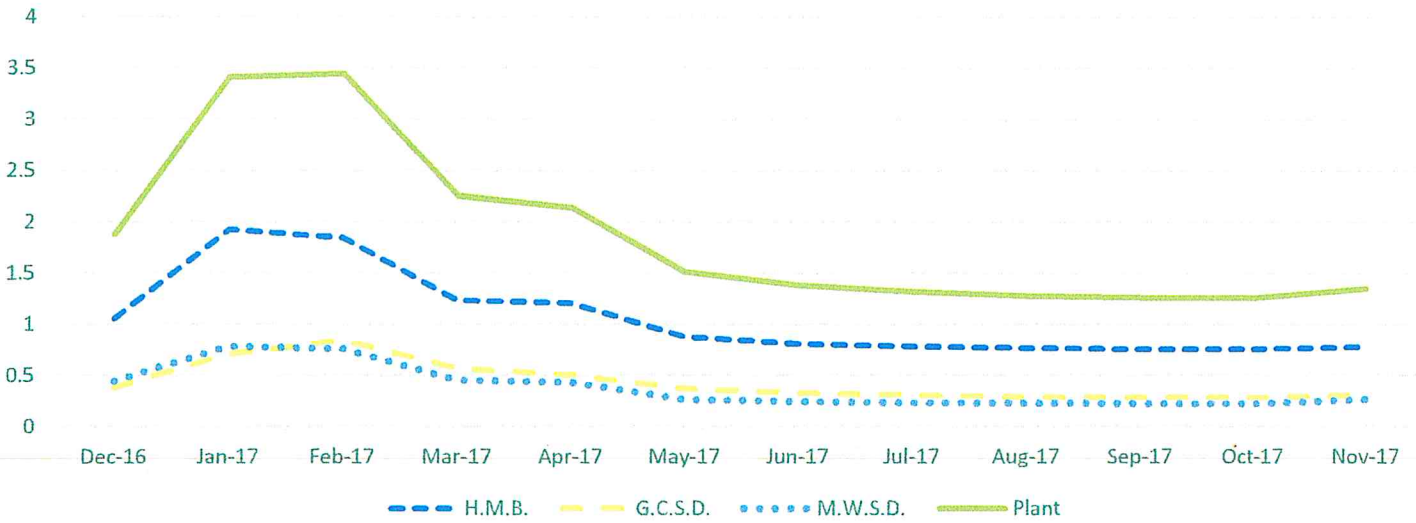
# Percent Distribution November 2017



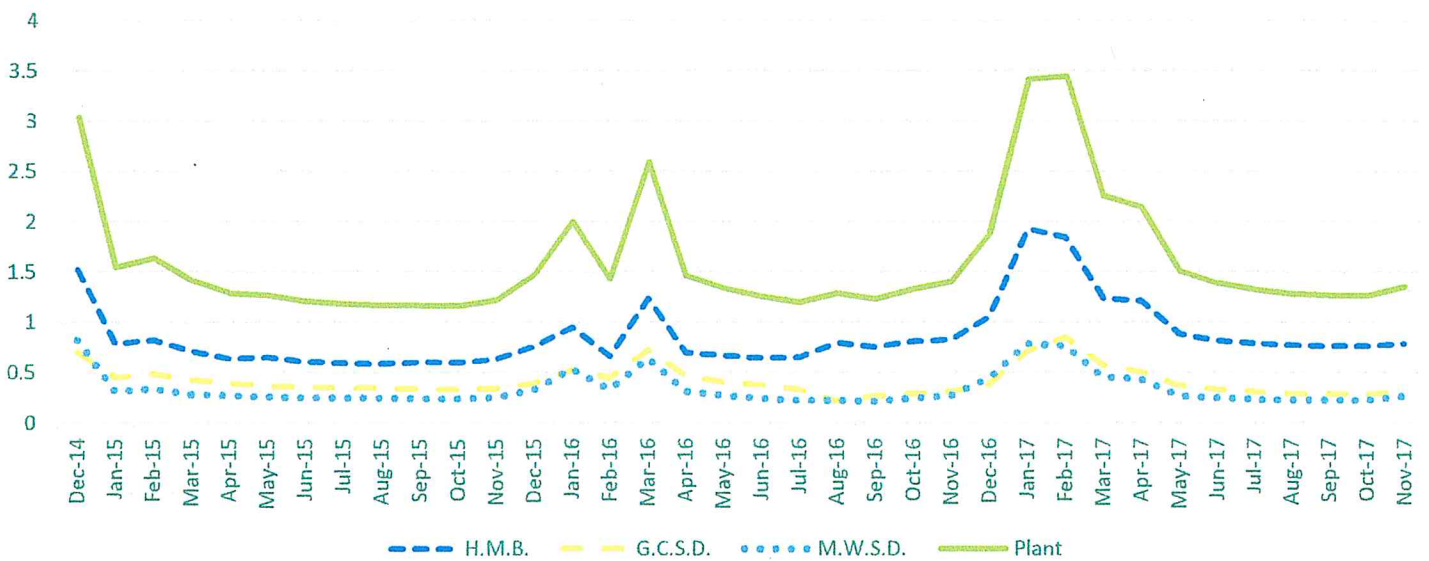


Most recent flow calibration December 2016 PS, November 2016 Plant

One Year Flow Chgart  
Dec 2016 - Nov 2017



Three Year Flow Chart  
Dec 2014 - Nov 2017



# Flow based percent distribution based for past year

1 year Distribution by %  
Dec 2016 - Nov 2017

